



WHAT WILL YOU FIND?



ANNUAL REPORT SEPTEMBER 2009 — AUGUST 2010

## A YEAR IN REVIEW, A PREVIEW OF THE FUTURE

Dear Friends,

During the past year, we at the Milwaukee Public Museum found ourselves in an exciting phase of growth: the phase of relationship building. We continued our task of reconnecting with the people of our city, our county, our state and beyond. As the new chairman and president, this task of forming the new relationships inherent to our roles was one that was expected, and we further discovered that the entire institution is undergoing this same process as well.

The MPM is always evolving, always undergoing transformation, just as we all are. As we enter a new phase for the Museum, we acknowledge that the people of our region have rediscovered this Museum over the past five years, and have given signs of approval. They like us! We have hosted several blockbuster exhibits and received abundant accolades from our appreciative guests. Most recently visitors enjoyed *Dead Sea Scrolls and the Bible*, presented in early 2010 by The Lynde and Harry Bradley Foundation, *Frogs: A Chorus of Colors*, presented in late 2010 by the Milwaukee Journal Sentinel, and *Mummies of the World*, our current special exhibition, graciously presented by the Northwestern Mutual Foundation.

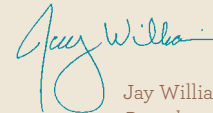
We feel confident in our strong position and are now more than ready to take our Museum to even greater places. Call it a “museum makeover,” if you will.

In this annual report you will notice a stellar new logo and tagline. “*What will you find?*” How you answer defines what your relationship is with the Museum. Is it whimsical, or is it serious? Is it off-and-on, or is it long-term? MPM provides an intersection between human history and natural science; a place of education, exploration, research and discovery; a safe haven for the preservation of the world and its people. We have a dedicated workforce, strong leadership and years of expertise. We have a loyal network of support through donors, board volunteers and staff, and Milwaukee County Officials.

MPM has indeed entered into a new phase. We’re excited to learn what we will find as we continue building new relationships. And we are ready to ask : **What will you find?**



Richard A. Meeusen  
Chairman of the Board



Jay Williams  
President and CEO

## WHAT WE DO

The Milwaukee Public Museum is many things to many people. To most, it's a fascinating retreat, and a great way to appreciate the wonders of the natural world. To others, it's the home of the IMAX theater and the Daniel M. Soref Planetarium, or a wonderful place to bring a class for a field trip. All of these uses of the Museum are valuable and enrich our community. The purpose of the Museum is to do three things: provide educational opportunities, offer permanent and traveling exhibits, and preserve objects in its collections for study and for safe keeping for future generations.

### EDUCATION

The Museum offers families, teachers, students, early learners and adults numerous opportunities to use exhibits and programs to interactively and creatively learn about the wonders of natural science and world cultures. Educators, curators and docents constantly develop meaningful learning experiences for visitors of all ages. Museum education programs include: Passport Distance Learning (including the Mammoth Expedition and Big Read programs), Early Learning programs, Science Explorations After School program, Natural History Lectures, museum

camp, museum overnights, and K-12 programs and tours. This year, two new programs were introduced as well — the Summer Urban Academy for at-risk youth and SPARK!, a program for caregivers and loved ones suffering from beginning to mid-stage Alzheimer's disease and other forms of dementia.

### SPECIAL EXHIBITIONS AND MUSEUM EXHIBITS

The Museum provides community residents once-in-a-lifetime views of some of the world's most precious and valuable artifacts and allows them to enjoy compelling and thought-provoking experiences. These national and international traveling exhibitions also provide an opportunity for the Museum to expand its presence regionally, increase attendance, acquire new members, and make Milwaukee a visible destination for tourists from throughout the state and the Midwest.

During the past year, the Museum hosted *Dead Sea Scrolls and the Bible: Ancient Artifacts, Timeless Treasures* — an exhibition that was entirely developed and built by Museum staff. Covering over 15,000 square feet of space,

it was the largest temporary exhibit that the Museum has ever built. The Museum's permanent exhibitions are also exceptional and encompass several natural history themes: Evolution and Extinction, Tropical and Temperate Ecology, Endangered/Threatened Species, Taxonomy and Field Guides, Ancient History and Mummies, and Local History and Resource Management.

### **COLLECTIONS & RESEARCH**

The Museum has 4.5 million objects in seven collections: Social Science: Anthropology, Archaeology and History; Life Science: Invertebrate Zoology, Vertebrate Zoology and Botany; and Earth Science: Geology/Paleontology.

Collections and Research:

- reveal a 5 billion year history of changes in the Earth's geology, climate and life.
- help us to map the locations and health of the planet's biodiversity and natural resources.
- possess the key information that we use to protect our natural resources.

- provide the materials for new drug therapies and insight into diseases.
- tell us about our human past and inspires people of all ages and interests.

Put simply, collections and research teach us about climate, biodiversity, medicine, disease, extinction, natural resources, life, and ultimately, about ourselves. In the past year, collections and research staff published 17 scientific papers, attended 40 professional meetings and presented talks at 16 professional meetings, gave 21 public lectures and served on 9 professional boards. Five staff members are adjunct at local universities. Loans of more than 11,000 objects were made to other institutions, more than 6,200 objects were cataloged into the collections, and two UW-Milwaukee museum studies courses were taught at the Museum by our staff.



The Museum's SPARK! program offers caregivers and loved ones with memory loss a safe haven in which they can engage in multi-sensory activities.



## JANUARY

SUN	MON	TUE	WED	THU	FRI	SAT
						1
2	3	4	5	6	7	8
9	10	11	12	13	14	15
16	17	18	19	20	21	22
23	24	25	26	27	28	29
30	31					

## EDUCATION

The Milwaukee Public Museum's education department reached out to a total of 36,942 participants through 1,250 programs this year. One outstanding new addition to the Museum's offerings is SPARK!, a new program for caregivers and loved ones suffering from beginning to mid-stage Alzheimer's disease and other forms of dementia. MPM is one of ten Wisconsin museums awarded funding by the Helen Bader Foundation to create such programming. SPARK! programs feature interactive exhibit experiences in a welcoming environment. Specially-trained Museum educators engage participants in lively discussions, object handling and other multi-sensory activities.



The Museum houses a collection of about 550,000 insects, including ants. This is one of the largest collections in the Museum.



## FEBRUARY

SUN	MON	TUE	WED	THU	FRI	SAT
		1	2	3	4	5
6	7	8	9	10	11	12
13	14	15	16	17	18	19
20	21	22	23	24	25	26
27	28					

## VOLUNTEERS & DOCENTS

The Milwaukee Public Museum's corps of more than 552 volunteers contributed 25,628 hours to education programs from September 1, 2009 through August 31, 2010. Most volunteers engage directly with Museum visitors — by giving docent tours, staffing a “Stop Spot” cart, interpreting exhibits, running films in the Nickelodeon theater, engaging children as a member of the Bug Patrol, and even dressing in period attire during the Museum's Alive! events.





Visitors to *Dead Sea Scrolls and the Bible: Ancient Artifacts, Timeless Treasures* study a full-size replica of the Great Isaiah Scroll.

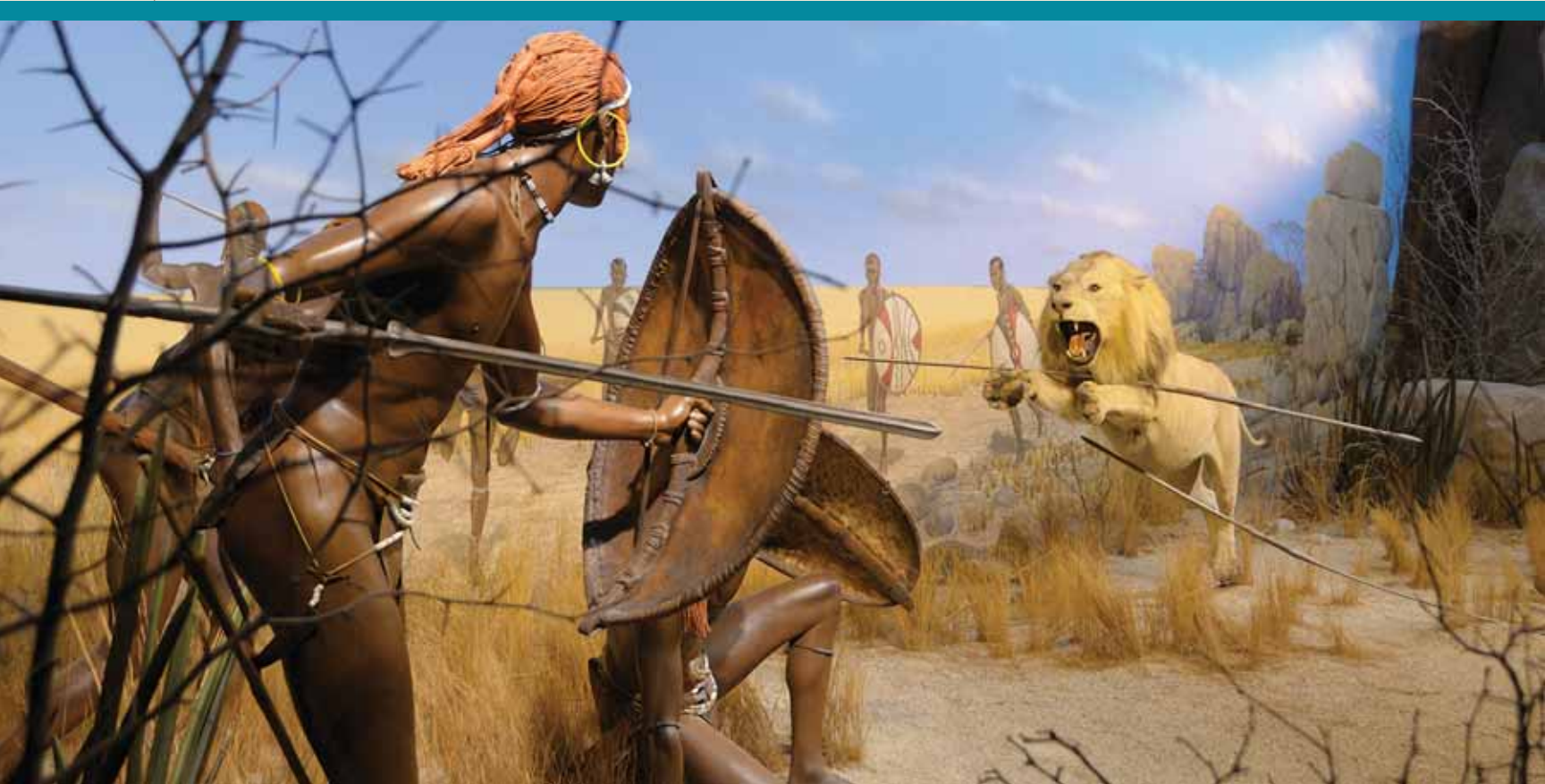


## MARCH

SUN	MON	TUE	WED	THU	FRI	SAT
		1	2	3	4	5
6	7	8	9	10	11	12
13	14	15	16	17	18	19
20	21	22	23	24	25	26
27	28	29	30	31		

## SPECIAL EXHIBITS

The Milwaukee Public Museum opened *Dead Sea Scrolls and the Bible: Ancient Artifacts, Timeless Treasures* on January 22, 2010. An exhibit years in the making, *Dead Sea Scrolls* was the largest temporary exhibit ever produced by the Museum, and included an international collection of artifacts, some more than 2,000 years old. During the run of this exhibit, Museum staff was gearing up to present another special exhibition, *Frogs: A Chorus of Colors*, which opened in October 2010.



Masai warriors hunt a lion in one of the Museum's famous African dioramas.



## APRIL

SUN	MON	TUE	WED	THU	FRI	SAT
					1	2
3	4	5	6	7	8	9
10	11	12	13	14	15	16
17	18	19	20	21	22	23
24	25	26	27	28	29	30

## PERMANENT EXHIBITS

The Milwaukee Public Museum's curators, collection managers and exhibits staff are continuously creating new exhibits, as well as updating older dioramas and displays. Likewise, students from the Museum Studies Program, a cooperative venture between the University of Wisconsin-Milwaukee and the Museum, develop an annual exhibit, gaining invaluable professional experience. This year's student exhibit, *Captivating Characters in World Mythology*, looked at mythological characters and their universal themes. Work also continued on the Hebior Mammoth exhibit — the star of the Museum atrium — with the addition of explanatory text panels.



Devil Dance Mask, Bolivia, an artifact from the Museum's Ethnographic Collection.



## MAY

SUN	MON	TUE	WED	THU	FRI	SAT
1	2	3	4	5	6	7
8	9	10	11	12	13	14
15	16	17	18	19	20	21
22	23	24	25	26	27	28
29	30	31				

## ANTHROPOLOGY

The Milwaukee Public Museum's Anthropology Department cares for more than 120,000 objects, including significant holdings in African and Pacific Island ethnology and strong collections of Great Lakes Indians artifacts and Wisconsin archaeology. With MPM's extensive holdings to draw from, Dawn Scher Thomae began content development for a small exhibit on Native Games to run in conjunction with the Indigenous Games 2011, which will be held in Milwaukee this summer.



Lalique Mask, a large glass plaque from the early 20th Century France, part of the decorative art collection in History.



## JUNE

SUN	MON	TUE	WED	THU	FRI	SAT
			1	2	3	4
5	6	7	8	9	10	11
12	13	14	15	16	17	18
19	20	21	22	23	24	25
26	27	28	29	30		

## HISTORY

The Milwaukee Public Museum's History collections hold more than 250,000 objects, including the Uihlein Stamp Collection, the Dietz Typewriter Collection and the Decorative Arts Collection. History staff members are continuously working to highlight groups within the collection, including pieces that have not yet been exhibited. To this end, Jacqueline M. Schweitzer, Honorary Curator of American History, published a webpage in 2010 outlining the fascinating history of the Works Projects Administration Milwaukee Handicraft Project — many objects of which are held in the Museum's collection.





The Museum is home to several Titan arum plants. When conditions are right, the plants can produce a “flower” that can reach heights of eight feet or more.

## JULY

SUN	MON	TUE	WED	THU	FRI	SAT
					1	2
3	4	5	6	7	8	9
10	11	12	13	14	15	16
17	18	19	20	21	22	23
24	25	26	27	28	29	30
31						

## BOTANY

The Milwaukee Public Museum's botanical collections represent a continuing attempt to catalog the rich variety of Earth's plant species. Scientific research by Museum staff centers on identification, classification, evolutionary history and conservation of plants. Curator Neil Luebke is also officially in charge of the Museum's rare Titan arum (*Amorphophallus titanum*) plants, also commonly known as "corpse flowers." When conditions are right, these plants can send up a large, smelly "flower" that can reach heights of eight feet or more. The Museum's second Titan arum bloom occurred on January 15, 2010, drawing many visitors attracted by the strange plant's rotten scent.





A glass undersea invertebrate, one of 75 glass models made by the Blaschka father and son team from Dresden, Germany that the Museum acquired in 1889 for exhibition. These now have become historic objects housed in our History Collection.



## AUGUST

SUN	MON	TUE	WED	THU	FRI	SAT
	1	2	3	4	5	6
7	8	9	10	11	12	13
14	15	16	17	18	19	20
21	22	23	24	25	26	27
28	29	30	31			

## INVERTEBRATE ZOOLOGY

The Milwaukee Public Museum's insect collections are comprised of more than 500,000 preserved specimens of various orders, but Lepidoptera (butterflies and moths) and Cloeoptera (beetles) are by far the two largest groups represented. Susan Borkin, MPM Director of Research Support Services & the Puelicher Butterfly Garden, is the Museum's resident butterfly expert. She frequently works with the Wisconsin Department of Natural Resources conducting field surveys of rare butterflies in the state, and in 2010 was also sent to southern Indiana by the Butterfly Conservation Initiative to compare the habitat of the endangered swamp metalmark butterfly there with sites in Wisconsin in order to aid in recovery efforts.



This mastodon, when uncovered at the turn of the 20th Century, was the best preserved specimen found to date and became a poster child in many textbooks.



## SEPTEMBER

SUN	MON	TUE	WED	THU	FRI	SAT
				1	2	3
4	5	6	7	8	9	10
11	12	13	14	15	16	17
18	19	20	21	22	23	24
25	26	27	28	29	30	

## VERTEBRATE ZOOLOGY

Vertebrate zoology is the study of animals with backbones, including fishes, amphibians, reptiles, birds and mammals. Milwaukee Public Museum vertebrate zoologists center their research on the classification, evolution, natural history and ecology of animals with an emphasis on documenting biological diversity. To this end, Senior Curator of Herpetology Robert Henderson continued writing a new book on treeboa natural history, in addition to producing several articles on snakes and reptiles for various scholarly journals such as *Reptiles & Amphibians* and *Applied Herpetology*.



The Torosaurus skeleton pictured here features a skull that is nearly nine feet long and eight feet wide. It is one of the largest dinosaur skulls ever found.



## OCTOBER

SUN	MON	TUE	WED	THU	FRI	SAT
						1
2	3	4	5	6	7	8
9	10	11	12	13	14	15
16	17	18	19	20	21	22
23	24	25	26	27	28	29
30	31					

## GEOLOGY & PALEONTOLOGY

Early Museum geologists collected fossils, minerals and rocks to portray a general history of the Earth and its processes. The Milwaukee Public Museum Geology staff continues to pursue the goal of keeping the public informed. Dr. Peter Sheehan, Head of Geology, is especially focused on unraveling the mystery of the dinosaur extinction 65 million years ago, a subject he's pursued throughout his professional career. Sheehan continues to uncover evidence supporting his theories, and in 2010 presented his findings to the Third International Paleontological Congress in London.





A sample of firearms from the Nunemacher Collection, one of the top ten firearm collections in the country (Remington Daringer and Single Shot pistols).



## NOVEMBER

SUN	MON	TUE	WED	THU	FRI	SAT
		1	2	3	4	5
6	7	8	9	10	11	12
13	14	15	16	17	18	19
20	21	22	23	24	25	26
27	28	29	30			

## CONSERVATION

The Milwaukee Public Museum holds the largest collection of typewriter and business machines in the United States. This collection, the Dietz Collection, has long been inaccessible due to the crowded conditions of the storage area, and many machines could benefit from conservation measures. This year, the Institute of Museum and Library Services awarded the Museum a grant to conserve this collection and to make it accessible in the future. In addition, Christine Del Re, Senior Conservator and project coordinator, will produce an automated database and digital images for curatorial and scholarly use.



Young learners at a Museum Summer Camp study pelicans in a North American diorama.



## DECEMBER

SUN	MON	TUE	WED	THU	FRI	SAT
				1	2	3
4	5	6	7	8	9	10
11	12	13	14	15	16	17
18	19	20	21	22	23	24
25	26	27	28	29	30	31

## ADMISSIONS

The Milwaukee Public Museum welcomes an extraordinary number of visitors every year, and 2010 was certainly no exception. Total attendance reached 451,056, and 154,056 visitors were entertained by IMAX films and Planetarium shows. The busiest days of the year were the Monday after Easter, when we welcomed 6,126 visitors, followed by the day after Christmas, with 5,349 visitors. 166,641 visitors experienced *Dead Sea Scrolls and the Bible*, while nearly 40% of these visitors, or 66,316, enjoyed the exhibit with an audio tour.

## PROGRAMS AND EVENTS

### DANCING THROUGH THE DECADES

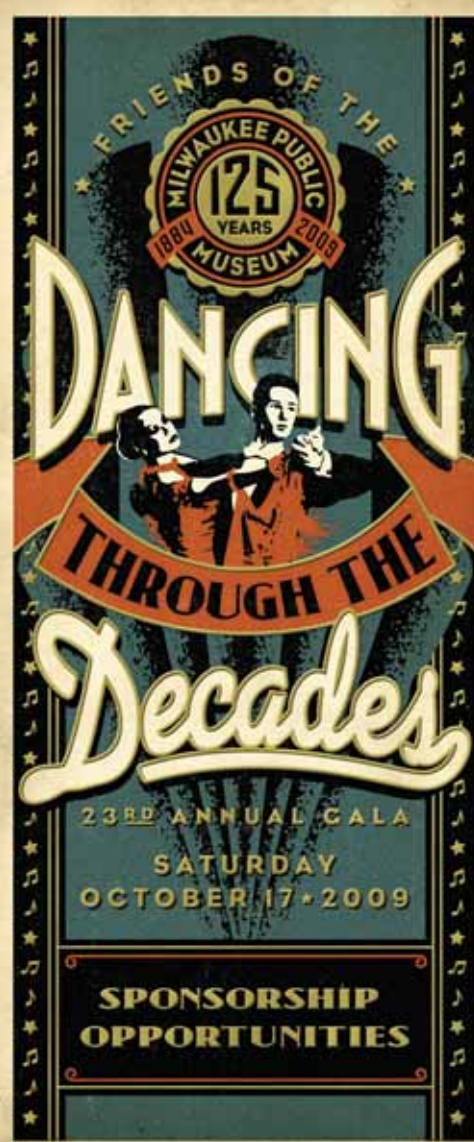
Guests at the 2009 annual gala, Dancing through the Decades, were treated to an evening featuring the best of popular dance through the eras. The night included dance lessons from members of Mad Hot Ballroom, along with a spectacular selection of delicious food, music and outstanding auction items. With special thanks to MillerCoors and honorary chair Mike Jones, the gala was another huge fundraising success for the Museum.

### HALLOWEEN HAUNTINGS

Member families and their guests enjoyed spooky chills and thrills during the Museum's annual two-evening Halloween Hauntings event, and attendance rose to more than 5,800 members and friends in 2010. Costumed children experienced the Museum in a whole new way as they trick-or-treated through Museum exhibits, made monster crafts, met live creepy-crawlies, and even rode the haunted freight elevator.

### FOOD & FROTH

MPM's beer festival continued to be one of the Museum's most popular fund-raising events. Once again, the event was sold out, and the Museum was thronged with patrons sipping more than 200 styles of beer, enjoying food from 17 vendors, and listening to music by 10 different bands, all while strolling the Museum's special exhibit floors.



### **LUNCHEON LECTURES**

The Museum's mission is to inspire learners of all ages, and what better way to stimulate the adult mind than through insightful conversation over lunch. The 2009-2010 series, organized and sponsored by the Friends of the Museum, covered a diverse range of topics, from the making of the Museum's famous exhibit Street of Old Milwaukee to the history of the Underground Railroad in Wisconsin. Nearly 500 patrons joined lecturers for these great Tuesday events.

### **BEHIND THE SCENES**

More than 900 members and guests were welcomed into "off-limits" areas of the Museum on a two-evening event in April. Visitors got to see many of MPM's obscure artifacts, as well as tour the "Bug House," where bones are cleaned, and learn about what really happened to the dinosaurs 65 million years ago.



## FRIENDS OF THE MUSEUM

### FOM Advisory Committee

Robert Adams  
Ryan Antkowiak  
Deborah Beischel  
Melanie Booth  
Tracy Brodd  
Shervonda Brown  
Lydia Chartre-Chair  
Charles Crueger  
Jeffrey Desannoy  
Robin Dorman  
Susan Fronk  
Tami Scully Garrison  
Mary Beth Geraci  
Mary Guy  
Erin Hareng  
Kessha Hobson  
James Holcomb  
Amy Wurlitzer Hopkins  
Erin Jende  
Jean Lindemann  
Maureen Manning  
Diana Mathis  
F. Robert Moebius  
Elizabeth Neff  
Lindsay Quilling  
Arlene Remsik

## 23<sup>RD</sup> ANNUAL GALA — DANCING THROUGH THE DECADES

OCTOBER 17, 2009

### Gala Honorary Chair

Mike Jones

### Gala Chair

Tracy Brodd

### Silent Auction Co-Chairs

Jon Hopkins & Amy Wurlitzer  
Hopkins

## GALA DONORS

### Presenting Sponsor \$25,000

MillerCoors

### Rumba Sponsors \$10,000

Evan & Marion Helfaer  
Foundation  
Johnson Controls Foundation  
Mr. & Mrs. Daniel F.  
McKeithan, Jr.  
Northwestern Mutual  
Foundation

### Printing Sponsor

Briggs & Stratton Graphic  
Services

### Silent Auction Committee

Ryan Antkowiak  
Tracy Brodd  
Jeff Desannoy  
Susan Fronk  
Mary Beth Geraci  
Mary Guy  
Erin Hareng  
Diana Mathis  
F. Rob Moebius  
Elizabeth Neff  
Lindsay Quilling

### Media Sponsor

Business Journal

### Design Sponsor

McDill Design

### Tango Sponsors \$5,000

Associated Bank  
Badger Meter, Inc.  
Briggs & Stratton Corporation  
After Market Service Division  
Albert J. & Flora H. Ellinger  
Foundation, Inc.  
Fiserv

### Corporate Sponsorship Committee

James M. Holcomb  
Tracy Brodd  
Susan Fronk  
Tami Scully Garrison  
Mary Beth Geraci  
Charles Crueger  
Mike Jones

M&I Bank  
Chip & Arlene Meier  
North Shore Bank, F.S.B.  
Uihlein-Wilson Architects

### Cha-cha Sponsors \$3,500

Baird Foundation, Inc.  
Cedar Street Advisors  
Davis & Kuelthau, s.c.  
Deloitte & Touche  
Hays Companies  
The Horton Group, Inc.  
Dorothy Inbusch Foundation  
Jessica Jubelier Design

### Decorations Committee

Deborah Beischel  
Melanie Booth  
Tracy Brodd  
Shervonda Brown  
Lydia Chartre  
Kessha Hobson  
Erin Jende  
Arlene Remsik

Manpower, Inc.  
The Marcus Corporation  
Foundation, Inc.  
Michael Best & Friedrich, LLP  
Pinstripe, Inc.  
Quarles & Brady LLP  
Vilter Foundation, Inc.  
We Energies

## MAJOR DONORS

The Milwaukee Public Museum is able to continue its commitment to providing a dynamic and stimulating environment for life-long learning because of the generous support of our donors. In Fiscal Year 2010, museum donors and members contributed over \$6 million in support of operations, exhibits, research, educational programs and endowment. Every gift is important, and we are sincerely grateful to each and every donor for their support. The following list recognizes donors whose gifts of \$1,000 or more were received between September 1, 2009, and August 31, 2010.

### Exceptional Annual Support

Friends of the Milwaukee Public Museum – Event Proceeds  
Milwaukee County

### \$100,000 – \$499,999

Helen Bader Foundation, Inc.  
Anthony & Priscilla Beadell  
The Lynde & Harry Bradley Foundation  
Elena Crim & Paula Schleicher  
Gretchen & Andrew Dawes Charitable Trust  
Greater Milwaukee Foundation  
Gerda A. Debelak Fund  
James & Avis Heller  
Mrs. Robert L. Manegold  
Jane Bradley Pettit Foundation  
Melitta S. Pick Charitable Trust  
Daniel M. Soref Charitable Trust

### \$50,000 – \$99,999

Michael & Sheila Falbo  
Estate of Pauline Goeltz  
Richard & Maribeth Meeusen  
Greater Milwaukee Foundation  
Helen & Jeanette  
Oberndorfer Fund

Schoenleber Foundation, Inc.  
Mr. & Mrs. William D. Van Dyke III

### \$25,000 – \$49,999

Anonymous  
Mae E. Demmer Charitable Trust  
P.J. DiStefano  
Ralph Evinrude Foundation, Inc.  
Lee Fitzsimonds  
Nicholas Family Foundation  
Stackner Family Foundation, Inc.  
Bert L. & Patricia S. Steigleder Charitable Trust  
Richard L. & Barbara B. Weiss

### \$15,000 – \$24,999

Anonymous LLC  
Greater Milwaukee Foundation  
KPA Fund II  
Hellenic Cultural Pavilion  
Evan & Marion Helfaer Foundation  
Dorothy Inbusch Foundation  
Ruth DeYoung Kohler

Krause Family Foundation, Inc.  
Laskin Family Foundation, Inc.  
Camille A. Lonstorff Trust  
Maihaugen Foundation  
Abigail O'Dess  
R.A. Stevens Family Foundation  
David & Julia Uihlein Charitable Foundation

### \$10,000 – \$14,999

Argosy Foundation  
Alvin & Marion Birnschein Foundation  
Bucyrus Foundation, Inc.  
Mary Corcoran  
Mark A. & Jean M. Elste Family Foundation  
Forest County Potawatomi Community Foundation  
Richard & Ethel Herzfeld Foundation  
Patti & Jack McKeithan  
Frank L. Weyenberg Charitable Trust  
Estate of Imogene M. Wyckoff

### \$5,000 – \$9,999

Richard & Jo Ann Beightol

Mrs. Frederick L. Brengel  
Anthony & Andrea Bryant  
Buchanan Family Foundation  
Chapman Foundation  
Derse Foundation  
Mary Mohrhussen Dittmar  
Robert Dohmen  
James E. Dutton Foundation, Inc.  
Albert J. & Flora H. Ellinger Foundation  
Ettinger Family Foundation  
Thomas & Marilyn Frenn  
Greater Milwaukee Foundation  
Donald & Barbara Abert Fund  
Mainman Family Fund  
Amy Wurlitzer Hopkins & Jon Hopkins  
Phyllis Huffman  
Michael Jones  
Mary Ann & Charles LaBahn  
Mr. & Mrs. Sheldon B. Lubar  
Kenneth & Maureen Manning  
Susan Marks  
Janet & James McKenna  
Marshall & Arlene Meier  
Genie & David G. Meissner  
Charles D. Orgiesen Foundation

Janice & Raymond Perry  
Community Fund, Inc.  
Robert & Josephine Pieper Foundation  
Stephen & Susan Ragatz  
Mr. & Mrs. V. Ross Read III  
Will Ross Memorial Foundation  
Nita Soref  
The Stratton Foundation  
R. F. & Anna L. Teerlink  
Mrs. Harvey E. Vick  
Usha & Yash P. Wadhwa  
Essie Whitelaw  
John & Laurie Yingling  
Ziemann Foundation  
In memory of John Malone, M.D.

### \$3,500 – \$4,999

Franz L. Bidinger  
Patrick & Anna M. Cudahy Fund  
Bridie Fanning & Michael West  
Dan & Jenifer Finley  
Greater Milwaukee Foundation  
Charles T. & Jean F. Gorham Fund  
Trepte Family Fund  
Clare M. Peters Charitable Trust



Harriet & Edward Purtell  
Karen & Chris Spahn  
Vilter Foundation

**\$2,500 – \$3,499**

Anonymous  
Alfred Bader  
Bayerlein Foundation LTD  
Desiree & Scott Beightol  
Mr. & Mrs. William D. Biersach  
Elizabeth Blackwood & William  
Honrath  
Anne Booth & Charles Trainer  
Clarence Chou  
Frank Daily & Julianna Ebert  
Richard H. & Jane S. Dean  
Nancy & Bill Gaus  
Greater Milwaukee Foundation  
John C. and Harriett Cleaver  
Fund  
Bernadine & Stephen Graff  
Fund  
Robertson II Fund  
Dr. Abraham B. and Irma F.  
Schwartz Fund  
Susan & Charles Henderson  
Dick & Donna Holscher  
Jerome & Dorothy Holz Family  
Foundation  
John T. & Suzanne S. Jacobus  
Family Foundation  
Imogene Johnson  
Kolaga Family Charitable Trust  
Billie & Mike Kubly  
Joan & Alfonso Robertson  
Gayle Rosemann & Paul McElwee  
Jack & Lucy Rosenberg  
Philanthropic Fund

Chris Rundblad  
Service Club of Milwaukee  
Linda & Richard Stevens  
Edward & Diane Zore

**\$1,500 – \$2,499**

Melanie & Steven Booth  
Roy Butter  
Angela & Virgis Colbert  
Lynda & Tom Curl  
Richard W. Cutler  
Elizabeth Dean  
Mr. & Mrs. Thomas J. Degnan  
Mr. & Mrs. Tom Ehrsam  
Foster Family Foundation  
Susan Fronk & Bill Thiel  
Thomas Gallagher  
David & Velma Geraldson  
David Glenn  
Greater Milwaukee Foundation  
Lois & Donald Cottrell Fund B  
Henry C., Eva M., Robert H.,  
and Jack J. Gillo Charitable  
Fund  
Mary A. Mellowes Fund  
Theodore & Anna Grollmann  
Fund  
Kavita & Rahul Gupta  
Jean & Thomas Harbeck Family  
Foundation  
Priscilla & G. Edward Heinecke  
Richard G. Jacobus Family  
Foundation, Inc.  
Kelben Foundation, Inc.  
Judith A. Keyes  
Ruth I. King  
Kuehl Family Foundation  
Milt & Carol Kuyers

Sybil G. La Budde  
Madeleine & David Lubar  
Phyllis & Walter Malzahn  
Charitable Trust  
George & Virginia Markham  
Mary Mowbray & Roland  
Schroeder  
Anne & Chris Noyes  
Robert D. Perlick  
Jim & Gwen Plunkett  
Gene & Ruth Posner  
Foundation, Inc.  
Gerard A. Randall, Jr.  
Schregardus Family Foundation  
Silverman Family Foundation  
Bill & Gloria Stanford  
Gerald & Louise Stein  
Sara Walker & Pat Dhein  
James B. & Elizabeth T. Wigdale  
Barbara & Ted Wiley  
Carol Krause Wythes & Dick  
Wythes  
Milt & Shir-Lee Zilis

**\$1,000 – \$1,499**

Francisco Aguilar & Elizabeth  
Ross  
Betty Alice Anderson  
Janis & William Annesley  
Anonymous  
Apple Family Foundation  
Audrey & Joseph Bernstein  
Bob & Vicki Bonadurer  
Mr. & Mrs. Robert Brachman  
Deanna Braeger  
Joe & Karen Branch  
Barbara & Dr. Henry Burko  
H.H. Camp Foundation

Rhonda & Tom Cardella  
Michelle Crockett  
Davidson & Harley Fund  
Mrs. Thomas & Meridith Derrig  
Mary Martha & Emmett J. Doerr  
Charitable Trust  
Dr. Howard & Eileen Dubner  
Patricia Emerson  
James Ericson & Patricia Platten  
Ericson Charitable Fund  
Linda Findley  
Gardner Foundation  
Nancy & Joseph Geenen  
Inez & Gene Gilbert  
Greater Milwaukee Foundation  
Barbara Brumder Buzard Fund  
Daniel & Mary Corcoran  
Family Fund  
Harry F. and Mary Franke  
Idea Fund  
Murphy Family Fund  
Paloucek Family Fund  
David C. Scott Foundation  
Fund  
Janet & Donald S. Greenebaum  
Mr. H. Lowell Hall  
David & Margarete Harvey  
James & Karen Hyde Foundation  
Allen Jansen  
Diane & Bob Jenkins  
Susan & Leander Jennings  
Jeff & Sarah Joerres  
Kirsten Olson Johnson & Collin  
Johnson  
Herbert H. Kohl Charities  
Mary Pauly Lacy  
Robert Little  
Franklin Loo & Sally Long

Wayne & Kristine Lueders  
John & Kathleen MacDonough  
Irene & Bill Moynihan  
Sally Mundt  
Linda & Jock Mutschler  
Lynn Nicholas  
John Ogden  
Mr. & Mrs. Philip W. Orth, Jr.  
Peck Foundation, Milwaukee  
LTD  
Claire Pfleger  
Joyce Raffel  
Elizabeth & John Roffers  
Mr. Wayne Roper  
Charles & Patricia Roy  
Dr. Bob Saichek  
Scott & Peggy Sampson  
Charitable Fund, Inc.  
Kim & John Schlifske  
Carolyn Schloemer  
Katherine M. Smith  
Joan & Mike Spector  
Joan & Jack Stein Foundation  
Suder-Pick Foundation  
Stu & Ann Tisdale  
Mike & Peg Uihlein  
Judith & Michael Van Handel  
Thomas & Lynne Van  
Himbergen  
Daniel & Yulia Ward  
Lowell Warshawsky  
Barbara & Merrick Wells  
Joan C. Wiegand  
Frances Wurlitzer  
Bettie Zillman

## CORPORATE CLUB

The following list recognizes corporations whose gifts of \$1,000 or more were received between September 1, 2009, and August 31, 2010.

### **\$100,000 – \$499,999**

Northwestern Mutual  
Foundation

### **\$50,000 – \$99,999**

M&I Bank  
MillerCoors

### **\$25,000 – \$49,999**

Assurant Health Foundation  
CHASE  
Johnson Controls Foundation  
Joy Global Inc.  
Sensient Technologies  
Corporation  
Yellowbook

### **\$15,000 – \$24,999**

Briggs & Stratton Corporation  
Foundation, Inc.  
GE Healthcare  
Ladish Co. Foundation  
Rexnord Foundation Inc.  
Rockwell Automation

### **\$10,000 – \$14,999**

A.O. Smith Foundation, Inc.  
Badger Meter Foundation, Inc.  
Robert W. Baird & Company  
Geraci & Associates  
The Harley-Davidson  
Foundation  
Hydrite Chemical Co.

Pennant Management, Inc.  
Wells Fargo

### **\$5,000 – \$9,999**

Cedar Street Advisors  
Cooper Power Systems, LLC  
Davis & Kuelthau, S.C.  
Deloitte & Touche  
Fiserv Inc.  
Kohl's Department Stores  
The Marcus Corporation  
Michael Best & Friedrich  
PNC Bank  
Sigma-Aldrich Corporation  
Town Bank  
Uihlein-Wilson Architects  
We Energies Foundation  
Matched Gifts  
West Bend Mutual Insurance  
Company

### **\$1,000 – \$4,999**

American Transmission  
Company  
Associated Bank  
AT&T Matching Gift Program  
Aurora Health Care  
Badger Mutual Insurance  
Company  
Bank Mutual Corporation  
Bostik, Inc.  
Brady Corporation  
Butters-Fetting Co.

Catholic Knights  
Cardinal Stritch University  
Charter Manufacturing  
Company, Inc.  
Desert Aire Corp.  
Digital Office Solutions, Inc.  
Direct Supply, Inc.  
Galland Henning Nopak, Inc.  
Habush Habush & Rottier, S.C.  
The Horton Group, Inc.  
Hays Companies of Wisconsin  
Direct Supply  
Holz Motors, Inc.  
InPro Corporation  
Jensen Environmental  
Management, Inc.  
Jessica Jubelirer Design  
Johnson Controls – Matching  
Gifts  
Journal Communications  
Kalmbach Publishing Company  
KCOTS LLC  
Kikkoman Foods Foundation,  
Inc.  
Manpower Foundation, Inc.  
Megal Development  
Corporation  
Menasha Corporation  
Foundation  
Merge Healthcare, Incorporated  
Metal-Era, Inc./Gene & Becky  
Mallinger  
MGIC Investment Corporation

Milcut, Inc.  
Miller Compressing Company  
MRA/The Management  
Association, Inc.  
National Insurance Services  
Group  
North Shore Bank, FSB  
Northern Brewer, LTD  
Park Bank Foundation  
The Penworthy Company  
Perlick Corporation  
Phoenix Care System, Inc.  
Pieper Electric, Inc.  
Pinstripe  
Punta Vista Bahia, s.a.  
Quarles & Brady  
Sargento Foods, Inc.  
Standard Process Inc.  
Strattec Security Corporation  
Teachscape  
Trackside Services, Inc.  
Usinger's Famous Sausage  
Wauwatosa Savings Bank  
Foundation  
Weldall Manufacturing, Inc.  
Wisconsin Energy Corporation  
Foundation  
Zilber, LTD.

## TRUSTEES OF TRADITION

Trustees of Tradition are individuals whose legacies demonstrate their commitment to carrying forward the mission of the Milwaukee Public Museum into the next century and beyond. This list is complete to August 31, 2010.

Mr. & Mrs. Steve Ahrens  
Anonymous  
Charles W. Aring, Jr.  
Estate of Gertrude Bates  
Priscilla & Anthony Beadell  
John Blimke, Ph.D.  
Laurette Broehm  
John & Julie Carpenter  
Lynn Chappy  
Mr. & Mrs. George Chester, Sr.  
Lucile Cohn  
Mary Corcoran  
Mrs. Roland S. Cron  
Estate of Margot Diekmann  
Mary & Fred Dohmen  
Patricia Emerson  
Estate of Tula Erskine  
Estate of Tom & Marilyn Fifield  
Linda Findley  
Estate of Robert T. Foote &  
Dede Meyer Foote  
Thomas & Marilyn Frenn  
Roy Fried  
Estate of Elsa C. Gatzke  
David Glenn  
Brian Glenn  
Estate of Pauline L. Goeltz  
Don & Carolie Goniou  
Payson R. Gould  
Bernadine & Stephen Graff

Evelyn & Harold F. Grunewald  
Kristin Hansen  
Priscilla & G. Edward Heinecke  
Ann Bardeen-Henschel, M.D.  
Thomas G.A. Herz  
Richard Hoffmann  
Dr. & Mrs. Donald R. Hoke  
Dick & Donna Holscher  
Estate of Freda Huber  
Joyce & Noral Jacobs  
Mr. & Mrs. Charles V. James  
Susan & Leander Jennings  
Ken & Cathy Kerznar  
Estate of Charles Kletzsch  
Mary Krall  
Jack & Jeanne Ladky  
Jean S. Lindemann  
Estate of Frieda F. Luctman  
Dr. Nancy O. Lurie  
Dr. John A. & Kristie Malone  
Mrs. Robert L. Manegold  
Estate of Mary M. Mason  
Elizabeth M. Matz  
Estate of Pauline McKnight  
Charles & Ann McNeer  
Estate of Suzanne Miles  
Calvin W. Miller  
Janet Miller  
Estate of Stephen D. Miller  
Estate of Lenore Nuesslein

Helen & Jeanette Oberndorfer  
Fund  
Estate of Mr. & Mrs. Philip W.  
Orth, Jr.  
Elizabeth & Frederick L. Ott  
Lygere Panagopoulos  
Joyce & Fred Raffel  
Marion C. & Verne R. Read  
Chris Rundblad & John Brander  
Randall Sandes  
Estate of Elizabeth Schulze  
Estate of Alice M. Shaughnessy  
Ms. Susan Shields  
Estate of Katherine T. Sieker  
Yvonne B. Smith  
Katherine M. Smith  
Nita Soref  
Bill & Gloria Stanford  
Gerald & Louise Stein  
John W. Taylor  
Aaron & Anita Tilton Family  
Fund  
Mr. & Mrs. William D. Van  
Dyke III  
Estate of Mr. & Mrs. Harvey  
E. Vick  
Lowell Warshawsky  
Marlene & Robert Watchmaker  
Estate of Audrey Wegner  
Sally & George Wells

Estate of Edward Weschler  
Joan C. Wiegand  
Barbara & Ted Wiley  
Mr. & Mrs. Webster  
Woodmansee  
Estate of Daisy Woods  
Diane & Richard Wright  
Imogene M. Wyckoff  
Robert S. Zigman  
Bettie Zillman

Special thanks to Milwaukee Public Museum employees who agreed to take unpaid furlough days in 2010 as a precautionary savings measure.

## PUBLICATIONS AND GRANTS

### PUBLICATIONS

Barker, B., **R. W. Henderson**, and R. Powell. *Epicrates monensis*. Geographic Distribution. *Herpetol. Rev.*, 40:455-456.

Berg, C. S., A. Jeremiah, B. Harrison, and **R. W. Henderson**. 2009. New island records for *Tantilla melanocephala* (Squamata: Colubridae) on the Grenada Bank. *Applied Herpetology*, 6: 403-404.

**Davis, V.** 2010. American Samplers and the MPM Collection. American Needlework Guild Newsletter.

**Henderson, R. W.** 2009. Henry Fitch at home and in the tropics, p. 396. In: Henry S. Fitch (1909-2009): Field notes on a wonderful life. *Herpetol. Rev.*, 40: 393-400.

**Henderson, R. W.**, and R. Powell. 2009. *Natural History of West Indian Reptiles and Amphibians*. Gainesville: University Press of Florida. xxiv + 495 pp.

**Henderson, R. W.** 2010. Henry Fitch at home and in the tropics. Pp. 12-13 In: Henry S. Fitch (1909-2009): Field notes on a wonderful life. *Reptiles & Amphibians*, 16: 9-17.

**Henderson, R. W.** 2010. *Eleutherodactylus johnstonei*. Microhabitat. *Herpetol. Rev.*, 41:195.

**Jass, J.** 2009. Is conservation dependent on charisma? *Tentacle*, [Newsletter of the IUCN/SSC Mollusc Specialist Group] 18: 8.

**Jass, J.** and B. Klausmeier. 2010. Slugs and snails (Gastropoda) native to Wisconsin [abstract]. *Field Station Annual Report*, 2009: 18.

**Jass, J.** 2009. George Chadwick's 1902 survey of an urban freshwater gastropod fauna. *Ellipsaria*, 11(2): 2.

**Jass, J.** 2009. George and Elizabeth Peckham's historic observations on Wisconsin spiders. *Peckhamia*, 77.1: 1-9.

Murphy, J.C., **R.W. Henderson**, and M. Rutherford. 2010. *Amphisbaena fuliginosa* (Reptilia: Squamata: Amphisbaenidae) in the Lesser Antilles. *Reptiles & Amphibians*, 17(3):181-183.

**Muchka, A.** 2009. Milwaukee Schutzenfest. Journal of the American Single Shot Rifle Association.

**Pauers, M. J.** 2010. Species concepts, speciation, and taxonomic change in the Lake Malawi mbuna, with special reference to the genus *Labeotropheus* Ahl 1927 (Perciformes: Cichlidae). *Reviews in Fish Biology and Fisheries*, 20(2): 187-202.

Powell, **R. R. W. Henderson**, and R. S. Thorpe. 2010. *Sphaerodactylus phyzacinus*. *Catalogue of American Amphibians and Reptiles*, 876:1-3.

**Sheehan, P.M.**, Isbell, J. L., & Fastovsky, D.E. 2010. Post-K/Pg terrestrial and freshwater recovery in a physically devastated landscape. *Program and Abstracts, Third International Palaeontological Congress, University of London*, p. 352.

Turk, P. A., N. N. Wyszynski, R. Powell, and **R. W. Henderson**. 2010. Population densities and water-loss rates of *Gymnophthalmus pleii*, *Gymnophthalmus underwoodi* (Gymnophthalmidae) and *Sphaerodactylus fantasticus fuga* (Sphaerodactylidae) on Dominica, West Indies. *Salamandra*, 46(3):125-130.

### GRANTS & AWARDS

**Del Re, C.** Conservation of the Dietz Typewriter Collection, *Institute of Museum and Library Services*, \$113,979 (continuing).

**Henderson, R.** Ecology of the Grenada Tree Boa. *Windway Foundation*, \$5,000.

**Koceja, D.** Full funding to attend "Designing and Implementing Accessible Informal Science Education Programs" March 11-14, 2010.

## FINANCIAL HIGHLIGHTS

### BOARD OF DIRECTORS

Milwaukee Public Museum

September 1, 2009 – August 31, 2010

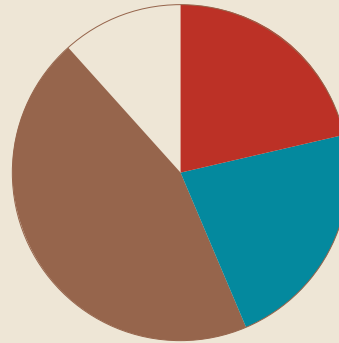
#### Officers

Richard A. Meeusen, Chairman  
 Essie Whitelaw, Vice Chair  
 Charles I. Henderson, Secretary/Treasurer  
 Thomas L. Frenn – Asst. Secretary/Asst. Treasurer  
 Jay Williams, President

#### Directors

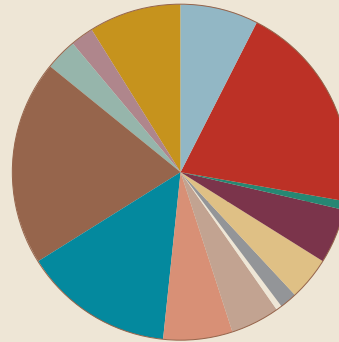
Scott Beightol	Avery Goodrich
Emilio Bras	Henry Hamilton III
Tracy Brodd	Jon W. Hopkins
Michael G. Carter	Michael T. Jones
Tracy Brodd	Jay C. Mack
Sharon Cook	Demond A. Means, Ph.D.
Patricia Coorough Burke	Gerard A. Randall, Jr.
Lydia Chartre	Bruce H. Ross
Michelle Crockett	Mark J. Sabljak
P.J. DiStefano	James “Luigi” Schmitt
Bill Eisner	Yash P. Wadhwa
Bridie A. Fanning	Sara J. Walker
Susan Fronk	John Yingling

Find the Milwaukee Public Museum’s IRS Form 990 and audit at [www.mpm.edu/about/records](http://www.mpm.edu/about/records).



#### 2010 SUPPORT AND REVENUE BY SOURCE

■ Contributions & Membership	\$3,463,817
■ Public Support	\$3,549,276
■ Earned Revenue	\$7,183,655
□ Other (Released from Restriction)	\$1,833,696
<b>Total Revenue</b>	<b>\$16,030,444</b>



#### 2010 EXPENDITURES BY FUNCTION

■ Curatorial	\$1,195,071
■ Exhibits & Graphics	\$3,082,887
■ Special Events	\$152,716
■ IMAX Theater	\$820,000
■ Programs	\$625,273
■ Contributed Services	\$248,154
□ Restaurant/Facility Rental	\$85,496
■ Retail	\$738,955
■ Fundraising	\$1,024,714
■ Administration	\$2,204,924
■ Facilities	\$3,027,836
■ Marketing	\$479,613
<b>Subtotal Museum Departments</b>	<b>\$13,685,639</b>
■ Interest Expense	\$335,450
■ Depreciation	\$1,356,895
<b>Total Operating Expenses</b>	<b>\$15,377,984</b>

<b>Total Assets:</b>	<b>\$28,311,357</b>
<b>Liabilities:</b>	<b>\$26,539,069</b>
<b>Net Assets:</b>	<b>\$1,772,288</b>