



# Educator Guide

## Fall 2019

August - January



Looking for ways to make learning come to life? Let us help you! The Milwaukee Public Museum is the most exciting field trip destination in the region, an educational experience that will last far beyond the visit with your students. We have many free resources that can supplement your field trip experience before, during, and after your visit to foster a deeper engagement with your students and your curriculum.



# TABLE OF CONTENTS

Welcome .....	2
Contact Information.....	3
Pricing .....	3
Planetarium Programs.....	3
Special Exhibits.....	4
Theater Offerings .....	5
Education Investigations.....	6
Exhibit Tours .....	7-8
Early Learning.....	8
MPM on the Move .....	9
Educator Benefits & Resources .....	10
Planning Your Visit .....	11



## Welcome

Dear Educator,

Welcome to the Fall 2019 semester!

We hope that this Educator Guide finds you ready for what will hopefully be an exciting and excellent school year. As you will see in the pages to follow, MPM has many unique educational opportunities for your students. Please check out our outreach program, MPM on the Move, and explore ways we can bring the Museum to your classroom. Coming to MPM for a field trip? Enhance your students' learning with programs led by our talented Educators and Docents.

We are also excited to host the *Spiders Alive!* exhibition this fall. More information on this colorful and extremely interesting exhibit can be found on page 4.

It is our hope that this guide serves as a tool to assist you in creating meaning and memorable experiences for your students. We look forward to working with you and your school this year!



Take care,

*Meghan Schopp*

Meghan Schopp

Director of Education and Public Programs

## CONTACT INFORMATION

**By Phone: Call 414-278-2714 or 888-700-9069**

**Field Trip Call Center Hours:** 9 a.m. to 4:15 p.m. Monday – Friday,  
9 a.m. to 3 p.m. Saturday, and 10 a.m. to 3 p.m. Sunday

## PRICING

Every school group visiting the Milwaukee Public Museum has the opportunity to experience a Planetarium program.

**STUDENT**  
(Grades Pre-K-12)  
\$9.75

**CHAPERONE**  
(Required ratio)  
FREE

**CHAPERONE**  
(Over required ratio)  
\$11

- Add-ons available at additional cost.
- Schools who have 60% or greater Free/Reduced Lunch qualify for \$2.75 per student discount.
- All other coupons, vouchers, free Museum days, and Museum memberships or promotions do not apply to school group admission rates.
- Milwaukee County school groups receive free general admission on any weekday in September, October, and November (excluding September 5, 2019; October 3, 2019; November 7, 2019).

### Homeschool Information

Homeschools do qualify for our School Group Rates. Homeschool educators must show their PI 1206 form to receive the school rates.

When coming on a field trip, homeschools may not use MPM Membership benefits.

Education Investigations, Early Learnings, or Exhibit Tours require a minimum charge of 10 students to book a program.

## PLANETARIUM PROGRAM

### Planetarium Program Series

#### Wisconsin Stargazing

All ages

Take a live tour of the current Wisconsin night sky in this 22-minute guided Planetarium program. A lively astronomy educator will show you all of the current sights on a clear Dome Theater “sky,” such as planets, constellations, meteors, and other fun celestial phenomena. The program includes a cosmic Q&A session and requests from the audience.

#### The Solar System Show

Grades 1+

Looking to explore way-out worlds? The blistering Sun? Mysterious moons? Crazy comets and amazing asteroids? Then join our gang of smart, wacky reporters and rambunctious planets in the Planetarium Channel’s new extravaganza, *The Solar System Show*! We promise planet fun for everyone. Warning: Audience participation may be required.

#### It’s About Time! Cosmic Cycles We All Live By

Grades 3+

Time impacts us everyday – but what is it exactly? Where does time come from? Explore these mysteries and many more in the Planetarium’s newest creation. Join friendly robots Tortoise and Hare in their voyage around the Earth and beyond to discover the wild origins of time!





## INCOMING SPECIAL EXHIBIT

# Spiders

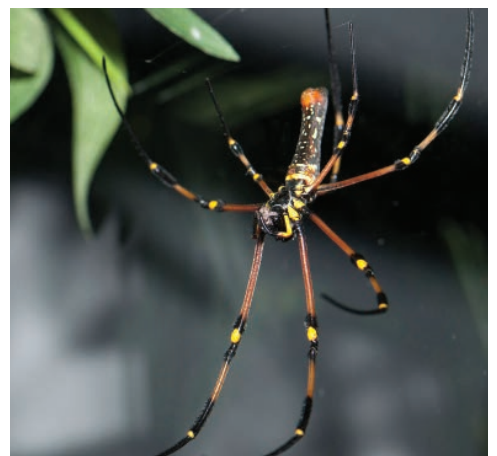
## ALIVE!



Call MPM today to  
book your Field Trip!  
414-278-2714

### Coming in Fall 2019

Take your students into the spider's den and uncover the hidden world of arachnids! At *Spiders Alive!*, you'll learn how spiders can live anywhere in the world – including rainforests, busy cities, and even the Arctic – and their role in our ecosystem as some of the tiniest predators in existence. See 17 real live spider species from all over the world in their habitats, and experience hands-on learning when your class holds models of spider eyes, urticating hairs, spinnerettes, and a brown recluse's chelicerae, or views a 100 million-year-old fossilized spider in limestone through a microscope.



# THEATER OFFERINGS

## Dome Theater Shows

### 3D Films

<i>Walking with Dinosaurs 3D</i> .....	Grades 1+
<i>Oceans: The Blue Planet 3D</i> .....	Grades 3+
<i>Robots 3D</i> .....	Grades 3+
<i>Sea Monsters 3D</i> .....	Grades 3+
<i>Mysteries of the Unseen World 3D</i> .....	Grades 4+
<i>Titans of the Ice Age 3D</i> .....	Grades 4+
<i>Extreme Weather 3D</i> .....	Grades 5+

### Giant Screen Film

<i>National Parks Adventure</i> .....	Grades 1+
<i>Great White Shark</i> .....	Grades 3+
<i>Humpback Whales</i> .....	Grades 3+
<i>Oceans: The Blue Planet</i> .....	Grades 3+
<i>Dream Big</i> .....	Grades 5+
<i>Amazon Adventure</i> .....	Grades 5+

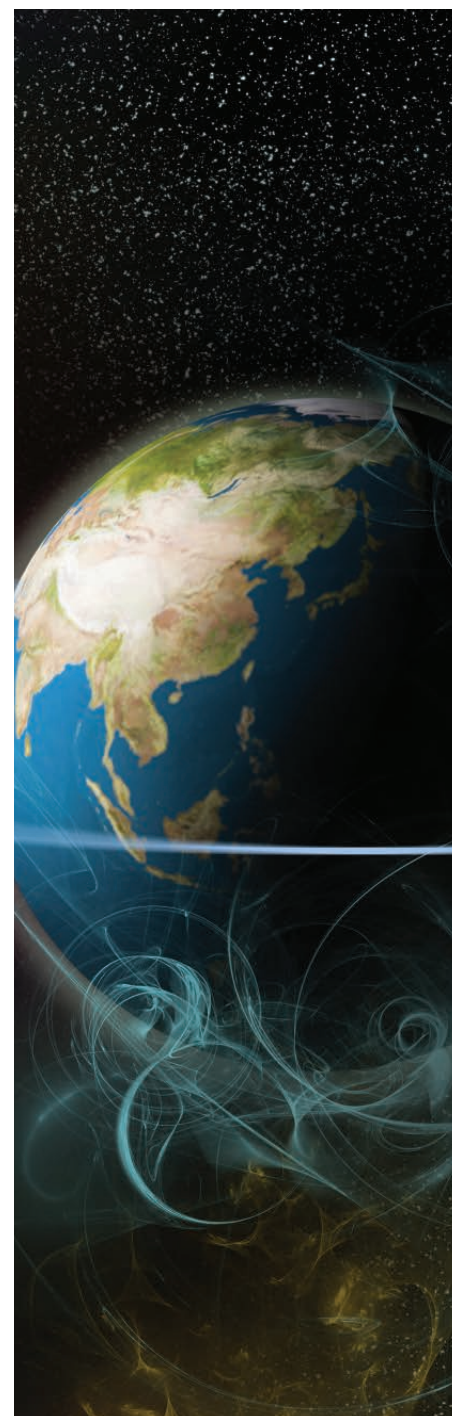
## Planetarium Show

### Planetarium Program Titles

<i>One World, One Sky: Big Bird's Adventure</i> .....	Pre-K
<i>Solar System Show</i> .....	Grades 1+
<i>Earth, Moon &amp; Sun</i> .....	Grades 1-4
<i>Defying Gravity! It is Rocket Science</i> .....	Grades 3+
<i>Did An Asteroid Really Kill the Dinosaurs?</i> .....	Grades 3+
<i>It's About Time! Cosmic Cycles We All Live By</i> .....	Grades 3+
<i>Cosmic Colors</i> .....	Grades 4+
<i>The Cosmic Recipe: Setting the Periodic Table</i> .....	Grades 4+
<i>A Teenager's Guide to the Galaxy</i> .....	Grades 4+
<i>The First Stargazers</i> .....	Grades 5+
<i>Space Aliens: Looking for Life in the Universe</i> .....	Grades 6+
<i>Chasing the Ghost Particle</i> .....	Grades 7+



DANIEL M SOREF  
PLANETARIUM



## EDUCATION INVESTIGATIONS

Education Investigations are led by Museum Educators, and content is developed based on DPI curriculum standards. Each Education Investigation links classroom lessons to the Museum collections, allowing students an opportunity to learn in our unique environment.

**Cost:** \$4 per student

**Length:** 50 minutes

**Times:** 10 or 11:30 a.m., Monday – Thursday

**Requirements:**

- Minimum of 1 adult chaperone (18+ years) for every 10 students
- Minimum of 10 students per program; maximum 30
- Groups that exceed 30 students require multiple reservations
- Group size per program may not exceed 33 guests

### Grades 1-3

#### Dinosaurs

Handle real dinosaur fossils and a paleontologist's tools in an exploration of these fascinating animals of Earth's distant past.

#### Signs and Symbols in Streets

Explore the life of early Milwaukeeans through a close look at the signs, symbols, and artifacts in the *Streets of Old Milwaukee* gallery.

#### Stories of the Skies

Take a walking tour of our unique corner of the universe, build a model of the solar system, and share star stories from ancient cultures around the world.

### Grades 1-8

#### Mummies

Follow the step-by-step process of ancient Egyptian mummification using a life-size model, followed by an up-close and personal look at one of the Museum's real mummies.

### Grades 4-12

#### Archaeology and Ancient Civilizations

Archaeological methods provide the focus as students examine artifacts from the Museum's vast collection to better understand what they reveal about past cultures.

Call MPM today to  
book your Field Trip!  
414-278-2714



# EXHIBIT TOURS

Exhibit Tours are led by highly trained Museum Docents. The objective of these tours is to complement lessons being learned in the classroom, and provide students an opportunity to gain an overview of all the wonderful content in our exhibits.

**Cost:** \$4 per student

**Length:** 50 minutes

**Times:** 10:30 or 11:30 a.m., Monday – Friday

## Requirements:

- Minimum of 1 adult chaperone (18+ years) for every 10 students
- Minimum of 10 students per program; maximum 30
- Groups that exceed 30 students require multiple reservations
- Group size per program may not exceed 33 guests

## Grades 1-3

### Animals of Wisconsin

Learn about native Wisconsin animals through our exhibits and hands-on artifacts.

### Butterfly Science

Explore the unique life cycle of butterflies, and how they adapt to live in various environments.

### Life in Africa

Explore Africa's different environments and how they affected the way native tribes and animals lived.

### Life in the Arctic

Learn about the climate of the Arctic, unique adaptations of Arctic animals, and lifestyle of Arctic peoples.

### Life in the Rainforest

Look at how weather impacts life in the rainforest and share fun facts about the different animals and plants that exist in the rainforest.

## NATIVE AMERICAN TOURS

### Tribes of Wisconsin

Explore the history and lifeways of Native Americans in Wisconsin.

### Compare and Contrast

Explore the similarities and differences among Native American tribes in various climates.

## Grades 4-6

### The Animals & Environment of Africa

Explore Africa's different environments and how they affected the way native tribes and animals lived.

### The Animals & Environment of the Arctic

Learn about the climate of the Arctic, unique adaptations of Arctic animals, and lifestyle of Arctic peoples.

### The Animals & Environment of the Rainforest

Focus on the biodiversity of the rainforest through an examination of the plants and animals it supports.

### Crossroads of Civilization

Docents available to provide exhibit highlights.

### Life in the European Village

Explore different ancient mediterranean cultures through the artifacts they left behind.

### Geology and Fossils of The Third Planet

Explore how the Earth formed and changed over time to support life in all its diversity, with a special emphasis on Wisconsin's unique geological past.

### Pre-Columbian Civilizations

Look at how archaeologists use artifacts to develop information about pre-Columbian people's everyday life and occupations.

### Streets of Old Milwaukee Past & Present

Look at how life in Milwaukee has changed over the years.

## NATIVE AMERICAN TOURS

### Tribes of Wisconsin

Explore the history and lifestyles of Native Americans in Wisconsin.

### Compare and Contrast

Explore the similarities and differences among Native American tribes in various climates.



## EXHIBIT TOURS continued

### Grades 7-9

#### Latin American Past and Present

Explore daily living and spiritual practices, and how each is impacted by environment and geography.

#### Milwaukee and the World

Learn about the many global influences on Milwaukee, and the local people and products that had a world-wide impact.

#### The Rainforest and You

Explore how the plants and animals of the rainforest impact your daily life, and how you can influence their survival.

Call MPM today to  
book your Field Trip!  
414-278-2714

## EARLY LEARNING

### Pre K-K5

Each 50-minute program begins in our early learning classroom with a group discussion on the chosen topic, followed by an opportunity to handle real specimens and objects. Next, we visit our exhibits for a sensory-rich experience designed to promote awe – and lots of questions – before returning to the classroom to participate in learning stations. The “learning station” format mirrors that in a typical classroom and includes literacy, math, science, and small and large motor skills activities. Full descriptions of each program can be found on our [website](#).

**Cost:** \$4 per student

**Grades:** Pre K – K5

**Length:** 50 minutes

**Times:** 10:30 or 11:30 a.m., Tuesday - Thursday

**Requirements:**

- Minimum of 1 adult chaperone (18+ years) for every 5 students
- Minimum of 10 students per program; maximum 25
- Groups that exceed 25 students require multiple reservations
- Group size per program may not exceed 30 guests

**Program Titles:**

September-October

- Walking with Dinosaurs
- Investigating Insects


November-January

- Walking with the Dinosaurs
- Polar Adventure

Available upon request

- African Safari
- Butterfly States





# MPM on the Move Outreach Program

The Milwaukee Public Museum is excited to bring our unique programming into the classroom! The MPM on the Move outreach program has something for everyone, and can be adapted for different age groups. All of our programs include hands-on learning opportunities led by our experienced and talented Educators!

**NEW  
PROGRAM**

**Program length:** 50 minutes

**Classroom Size:** Up to 30 students

**Grade Level:** Adaptable for all grade levels

**Program Cost:** \$150 for first program, \$75 for additional program on the same day

**How to Book a Program:** Start by completing this [online form](#).

A staff member will follow-up with you within 2 business days.

**Questions?** Email [outreach@mpm.edu](mailto:outreach@mpm.edu)

## Program Options

### Get Wild in Wisconsin

Investigate Wisconsin's wildlife! Explore the rich variety of plants and animals that populate our state. Find out why they're so important and learn ways to protect Wisconsin's habitats and biodiversity.

Participants will get the chance to model an ecosystem and to pot native wildflowers to make their gardens more welcoming to pollinators.

### The Beautiful World of Butterflies

Butterflies may be beautiful, but that's not why they're important! Learn about the residents of MPM's *Butterfly Vivarium* while we get up close and personal with these fascinating animals.

Participants will have an opportunity to observe real butterfly specimens under a microscope while exploring how special their wings really are.

### Wisconsin Rocks!

Discover how Wisconsin's landscape has evolved through time and what geology can tell us about our state's past.

Participants will get a chance to examine real fossils and use them to determine how Wisconsin's geography has changed over millions of years.

### Mummies Mania

Explore the mysteries of mummies as we learn how and why Ancient Egyptians mummified their dead.

Participants will get a chance to help in the mummification process of a life-size model.

### Digging up Discoveries

Enter the mind of an archaeologist! Learn what clues scientists use when analyzing artifacts and what found objects can tell us about a culture.

Participants will have an opportunity to examine real artifacts from MPM's education collection and come up with their own hypotheses about who used them and why.

### All Things Space

Join MPM as we investigate our corner of space and beyond! Learn how our understanding of the universe has changed through the years.

Participants will get a chance to model the movement of celestial bodies and build their own scale model of the solar system.

### Dinosaur Hunt

Join us on a trip back in time to the Mesozoic Era, where we'll learn all about dinosaurs and the scientists who study them!

Participants will have an opportunity to handle real dinosaur fossils and make their own fossil replica to take home.

**More information at [www.mpm.edu/outreach](http://www.mpm.edu/outreach)**

## EDUCATOR BENEFITS

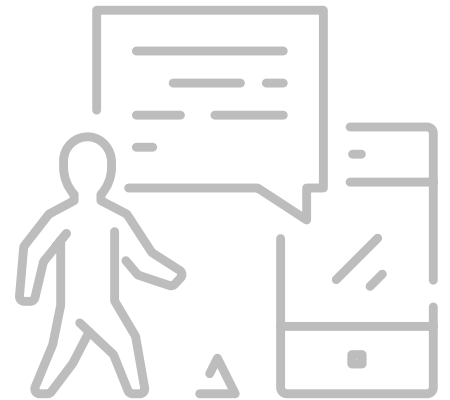
### FREE Educator Visit

Visit the Museum before you bring your class to prepare yourself for a memorable field trip with your students. Learn more [online](#).

### Hall Pass Program

Our [Hall Pass program](#) is exclusive to those schools whose teachers bring their class to the Milwaukee Public Museum. This free program comes with our commitment to help you achieve your curriculum and professional objectives while also providing personal benefits.

Call MPM today to  
book your Field Trip!  
414-278-2714



## PROFESSIONAL RESOURCES

### Fossil Fuel Fund

The costs associated with a field trip can add up quickly. MPM's Fossil Fuel Fund may be able to help alleviate some of these costs. The process is easy: simply book your field trip, and then apply for a Fossil Fuel Fund award. Schools must have at least 60% of student population qualifying for reduced and/or free lunches, per published state data. Other restrictions and requirements apply; please visit our [website](#) for more information.

### Social Media

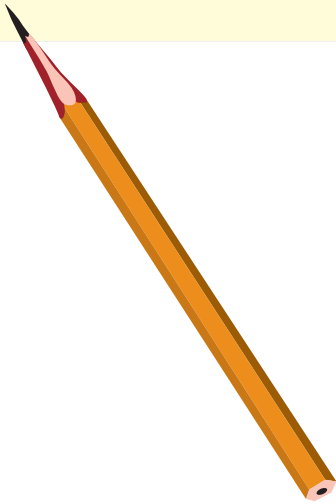
Looking to get a more detailed look at MPM, our collections, and our staff? Impress your students and colleagues with some behind-the-scenes knowledge. Follow us on [Facebook](#), [Twitter](#), and [Instagram](#).



# PLANNING YOUR VISIT

## Chaperone Requirements

- Grades pre K-K5:  
1 adult per 5 students
- Grades 1-12:  
1 adult per 10 students
- Required ratio of chaperones are FREE
- Additional charge for chaperones over required ratio



## Preplanning Your Visit

- Choose three potential field trip visit dates.
- Calculate the total number of students and required chaperones visiting.
- Book your field trip by calling 414-278-2714. \*Please note: Reservations must be made, confirmed, and paid at least two weeks prior to visit.

## Before Your Visit

- Prepare yourself by visiting the Museum prior to your field trip with a [FREE educator visit](#) by showing your current Educator ID or paycheck stub at the admissions window.
- Browse and print MPM's [Exhibit Explorer Guides](#) for your chaperones.
- Review chaperone guidelines and behavior contract with all adults and students visiting with your classroom. Behavior contract must be signed by lead teacher and submitted during check-in.
- Final guest number and payment are due two weeks prior to arrival date. Adjustments will not be made once final payment has been received. Reservations not paid by the due date are subject to cancellation. We do not accept Purchase Orders.
- School groups may modify their numbers before payment is due (2 weeks prior) or received, subject to availability. Reservations are non-refundable once payment is received. No individual refunds will be given.

*\*Field trips can only be rescheduled in cases where school has been canceled.*

## During Your Visit

- The entire Museum, including the Dome Theater and special exhibit space, is wheelchair accessible. Wheelchairs and strollers are available for rental.
- Use of name tags or matching t-shirts to identify your group is highly recommended.
- Be sure each chaperone has a MPM school group map. Review important meeting times and locations.
- Lunch times are 20 minutes long and prescheduled on the half hour in our student lunch room. Lunch carts will be available upon arrival to drop off lunches.
- Provide bus drop-off, parking, and pick-up information to bus driver.

## After Your Visit

- Encourage students to reflect on what they learned during their visit.
- Preplan your next [MPM field trip](#).





# Top 5 Reasons to Visit MPM

1

Students are encouraged to **DISCOVER** a world of ideas, history, science, and culture.

2

**IMMERSIVE** and interactive exhibits create a multi-sensory experience.

3

School-based learning is **ENHANCED** by the Museum's exhibits for various subject areas.

4

Students' **EXPERIENCE** is distinctive and cannot be replicated in the classroom.

5

**Learning at the Milwaukee Public Museum is FUN!**

Looking to get a more detailed look at MPM, our collections, and our staff? Impress your students and colleagues with some "behind-the-scenes" knowledge. Follow and like us on social media.

