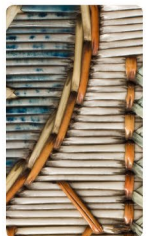
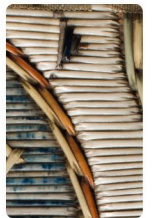
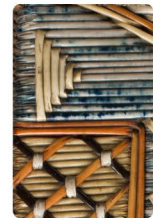
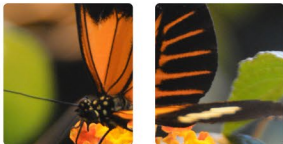


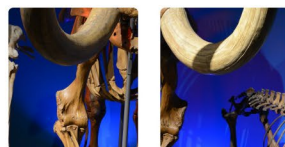
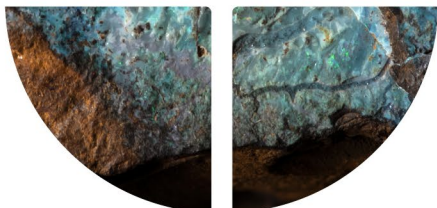
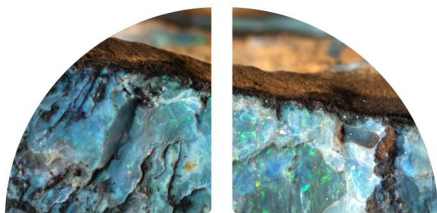


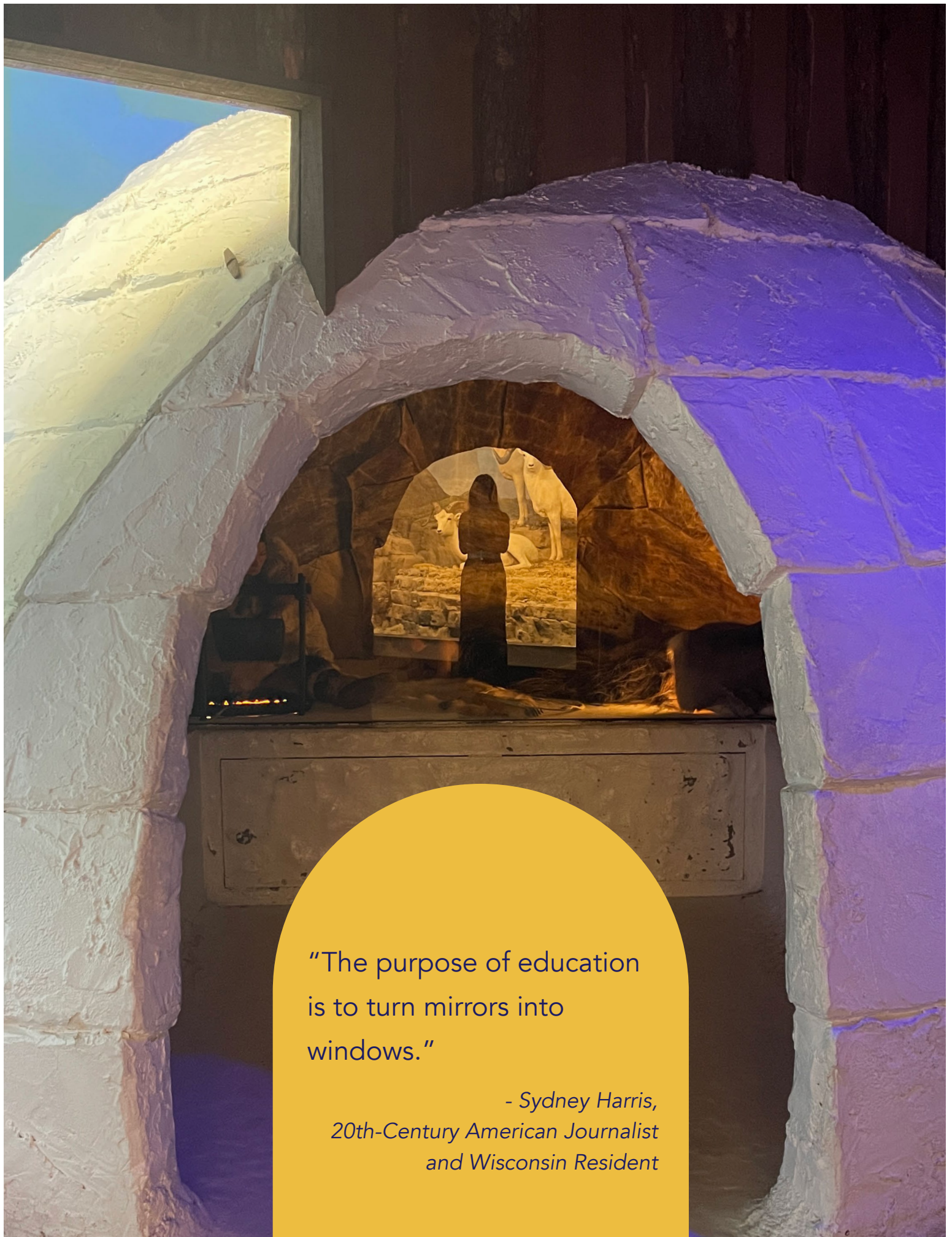
MILWAUKEE PUBLIC MUSEUM



ANNUAL REPORT

2022/23





"The purpose of education
is to turn mirrors into
windows."

- Sydney Harris,
20th-Century American Journalist
and Wisconsin Resident

Table of Contents

03

Letter from the Presidents

05

Board of Directors

06

Museum at a Glance:
Fast Facts

07

Visitorship & Reach

10

Final Special Exhibits

14

Future Museum Preview

19

Collections & Research
Updates

27

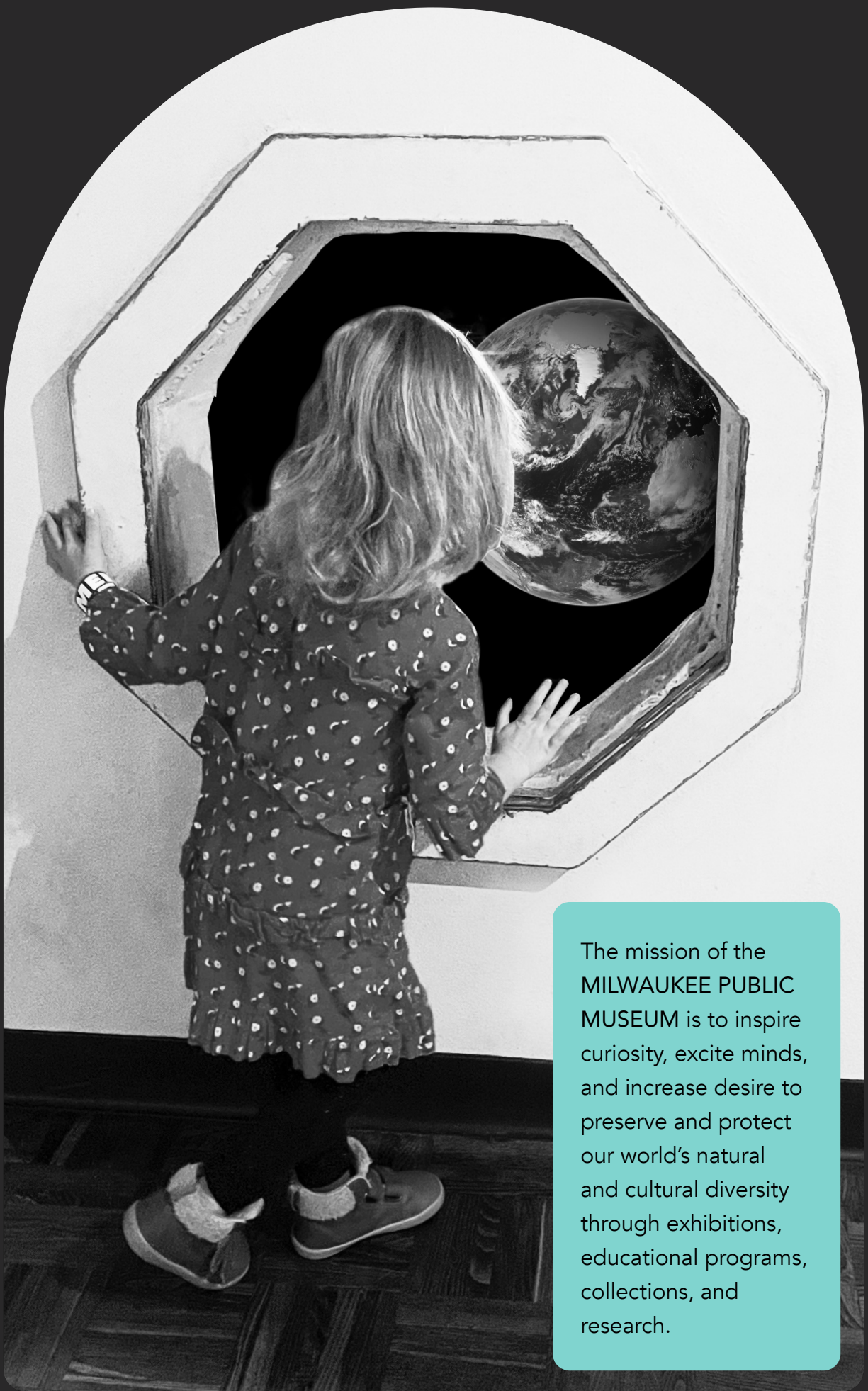
Inclusivity, Diversity, Equity,
& Accessibility

32

Education, Events,
& Programs

35

Financials & Giving



The mission of the
**MILWAUKEE PUBLIC
MUSEUM** is to inspire
curiosity, excite minds,
and increase desire to
preserve and protect
our world's natural
and cultural diversity
through exhibitions,
educational programs,
collections, and
research.

Dear Friends:

A visit to the Milwaukee Public Museum (MPM) is like opening a window to the rest of the world—the world thousands of miles from home or millions of years in the past. As we open these windows, we open our minds to new perspectives, new cultures, new scientific discoveries, and new ways of thinking. These windows help deepen our understanding of the people, plants, and animals around us and inspire us to be better stewards of the world's cultural and natural diversity.

This past year, our two traveling exhibits gave glimpses into what it's like to be a narwhal in the frigid waters of the Arctic or a slow-moving sloth in the fast-paced animal kingdom. Through our collections and research, we shared insight into the identification of new species, efforts in specimen digitization, and never-before-studied evolutionary traits. Our work in inclusion, diversity, equity, and accessibility initiatives led to new partnerships, community-wide conversations, improved visitor experiences, and increased staff awareness.

Finally, we also gave the public a window into our vision for the next evolution of this institution. Through a series of unveilings over the course of three months, we shared sketches and details about the Future Museum's five permanent galleries, providing important insight into the collections items, exhibit design features, and storylines that visitors can expect to enjoy in our new home. This preview ignited a new wave of excitement and support from the community, and as this project continues to build momentum, we are grateful to all of you who have championed each milestone.

We hope each of these windows—whether the view is of the past, present, or future—open up new opportunities to engage, educate, and enrich our visitors for generations to come. Thank you for joining us as we look outward and charge forward!

With gratitude,



Dr. Ellen Censky
President & CEO



Patrick (P.J.) DiStefano
Board Chairman





Board of Directors

September 1, 2022 - August 31, 2023

OFFICERS

Patrick (P.J.) DiStefano

Chairman
Managing Partner, Deloitte

Lynn Warner Brengel

Vice Chairwoman
Community Volunteer

John Roberts

Vice Chair
Vice President, Field Talent & Performance
Northwestern Mutual

Joshua (Josh) Erickson

Treasurer
Director of Legal Services,
Corporate and Finance,
WEC Energy Group, Inc.

Timothy (Tim) Byrne, CFA

Assistant Treasurer
Chief Information Officer/
Managing Director, Baird

Christine (Chris) Rundblad,

Secretary
Community Volunteer

Mary Ellen (Candy) Pindyck

Assistant Secretary
VP, Meridian Industries, Inc.

Ellen Censky, Ph.D.,

President/CEO (ex-officio)
Milwaukee Public Museum

DIRECTORS

Jason Allen

Partner, Foley & Lardner, LLP

Ethan Elser, Sr.

VP & Principal, PACE Equity

Peter Feigin

President, Milwaukee Bucks,
President, Fiserv Forum

Ivan Gamboa

SVP, Tri City National Bank

Kristen Hardy

Assistant General Counsel,
Northwestern Mutual

Margarete Harvey

Community Volunteer

Chris Her-Xiong

Founder/Executive
Director, Hmong American
PeaceAcademy, Ltd.

Patricia Hoben, Ph.D.

Executive Director, City
Forward Collective

Lyle Ignace, M.D., M.P.H.

CEO, Gerald L. Ignace Indian
Health Center

Niksa (Nik) Ivancevic

Partner, Midwest Fiber
Networks, LLC & CableCom

Angie Izard

Director of Multicultural
Projects, University of
Wisconsin - Milwaukee

Corey Jaskolski

President & Founder,
Synthetiaic

Khalaf Khalaf

Vice President, General
Counsel, Johnson Outdoors

Michael Maistelman

Attorney & Managing Partner,
Maistelman & Associates, LLC

Thad Nation

Owner, Nation Consulting

Marcelia Nicholson

Chairwoman,
10th District Supervisor

Brad Peters

Regional President,
Northern Trust

Joel Plant

Chief Executive Officer,
Frank Productions, LLC

Anna Ramirez Baritt

Early Childhood Advocate
and Educational Consultant

Gerard Randall

Executive Director, Milwaukee
Education Partnership

Marlon Sullivan

Executive VP & Chief Human
Resources Officer,
Johnson Controls

Michael Tate

Principal, Wavecrest
Consulting and Analytics

Charlie Uihlein

Executive Director,
Teens Grow Greens

Mike Van Asten

Founder & President,
Incredible Edibles, Inc.

Jerome (J.J.) Weis

President & Lead
Administrator, Jerome J.
and Dorothy H. Holz
Family Foundation

Charles (Charlie) Wright, Jr.

VPO, Rheocast Company,
a division of The Fall
River Group, Inc.

Gail Yabuki

Director, The Yabuki
Family Foundation

Patricia (Patty) Yunk

Community Volunteer



Museum at a Glance



The Cambrian Trackway fossil (background) is a half-billion-year-old window to when animal species started moving from water to land. This specimen has been kept in storage at MPM since 2017 but will be on permanent display in the Future Museum.

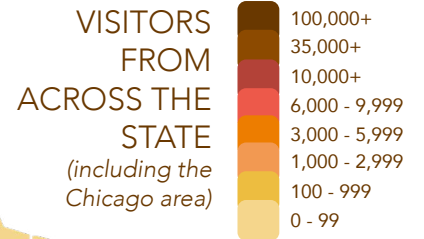
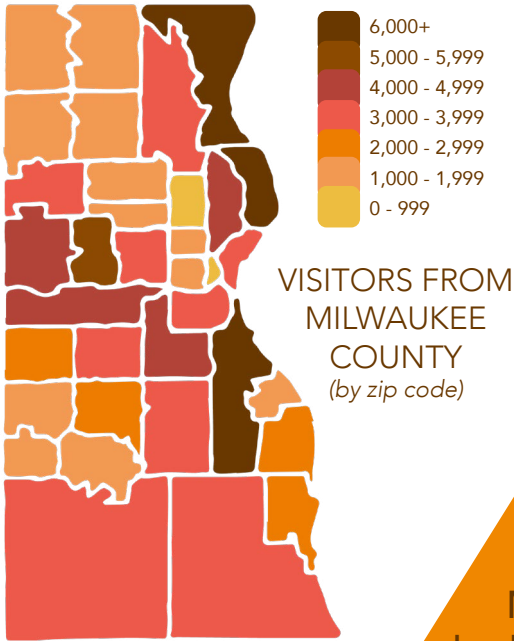


Visitorship & Reach



HALF of

Wisconsin visitors came
from our 71 counties other
than Milwaukee



MPM
had visitors
from **EVERY**
STATE



MPM
INSPIRES
CURIOSITY AND
EXCITES MINDS BY
WELCOMING VISITORS
VIRTUALLY AND
IN PERSON BOTH
**NEAR
AND
FAR!**

1 MILLION+
web visitors from
across the states...

...as well as
web visitors
**FROM ACROSS
WORLD**

SOCIAL MEDIA
IMPRESSIONS



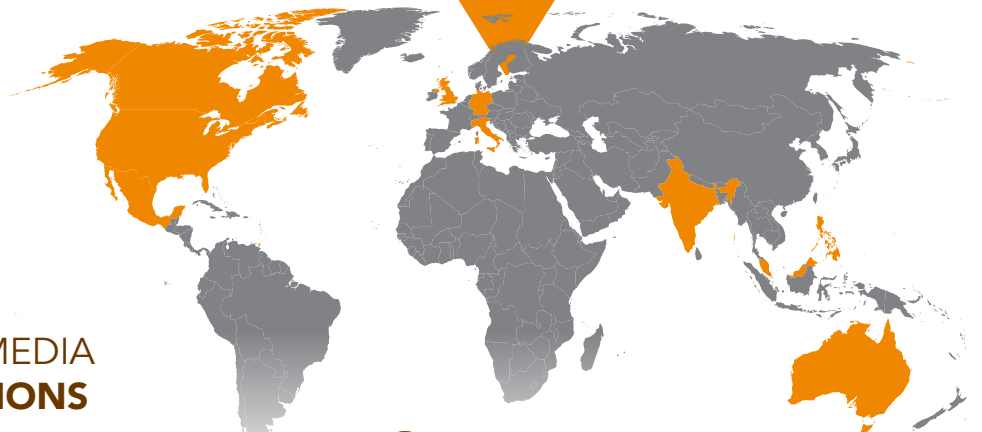
674,413



632,448



2,054,235





Final Special Exhibits



FROM SEPTEMBER 2022 TO AUGUST 2023, MPM WELCOMED TWO TRAVELING EXHIBITS. THROUGHOUT THE MUSEUM'S HISTORY, THESE UNIQUE EXPERIENCES HAVE BEEN A

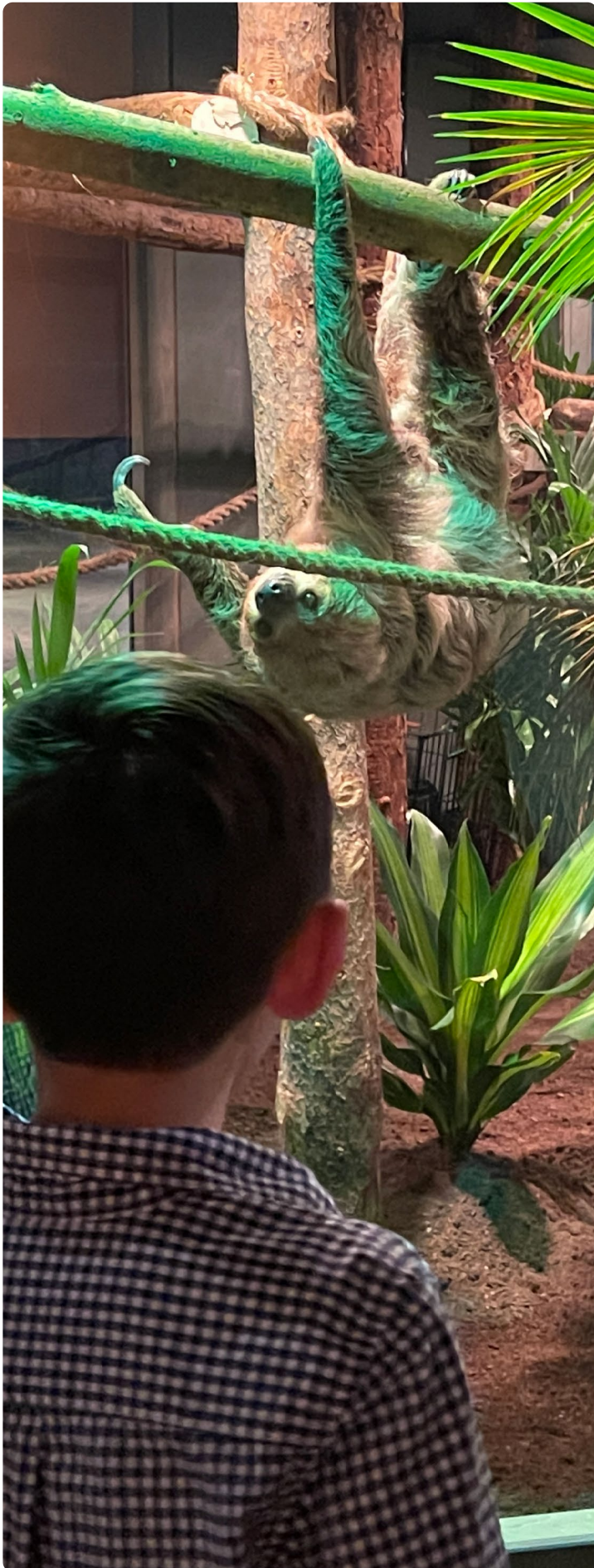
LOOKING GLASS

TO THE WONDERS OF THE WORLD, WITHOUT ITS VISITORS HAVING TO LEAVE WISCONSIN.

NARWHAL: REVEALING AN ARCTIC LEGEND July 11-October 2, 2022

This exhibit made a big splash! *Narwhal: Revealing an Arctic Legend* took a look at the evolving perceptions of narwhals in addition to their physiology and behaviors. This successful three-month run saw 36,400 visitors and \$29,000 of narwhal and Arctic-related merchandise sold.





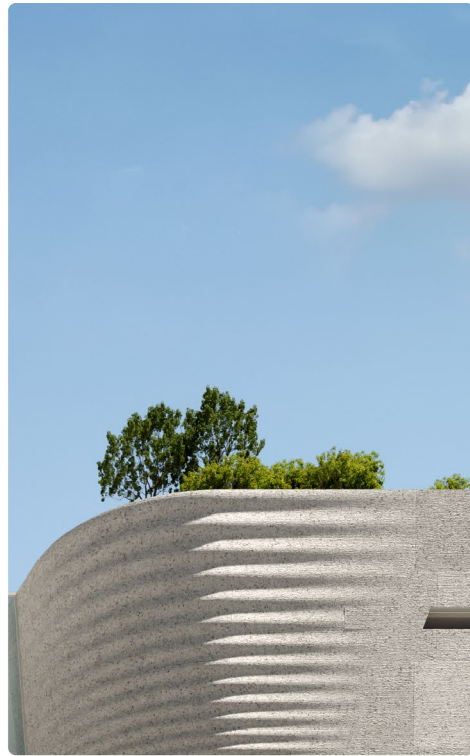
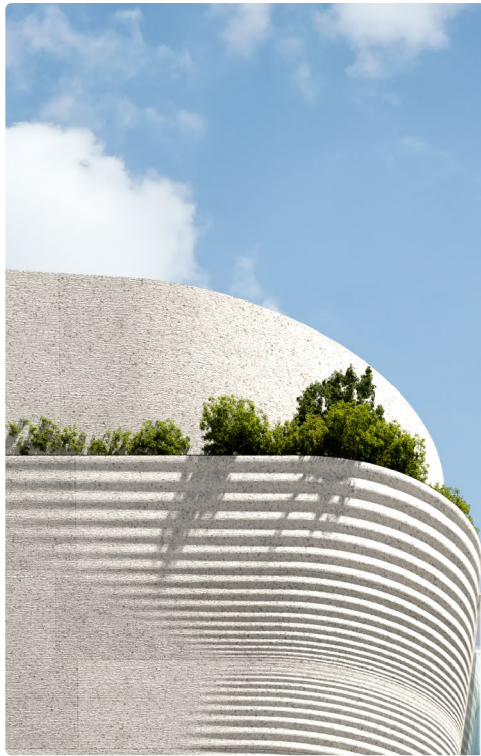
SURVIVAL OF THE SLOWEST February 11-May 19, 2023

Chill out! *Survival of the Slowest* featured the advantages of being slow along with the disadvantages of being fast through 19 different live-animal and plant habitats. This successful three-month run saw 76,000 visitors and \$148,000 of sloth and other slow-animal merchandise sold.





Future Museum Preview



THIS PAST YEAR INCLUDED SEVERAL IMPORTANT MILESTONES IN THE FUTURE MUSEUM PROJECT, INCLUDING THE MUCH-ANTICIPATED REVEALS THAT GAVE THE PUBLIC ITS FIRST GLIMPSES AT THE INTERIOR GALLERIES AND LAYOUT. THESE GLIMPSES SERVE AS A WINDOW TO THE MUSEUM'S FUTURE.

FUTURE MUSEUM SURVEY

This fiscal year began with a public survey, organized by MPM and Thinc Design, to gather community feedback for the Future Museum. The survey received 4,754 responses from people in 466 ZIP codes. Survey questions requested input on various exhibit topics and themes, preferred events and opportunities to engage, and insight into what visitors find most valuable in a museum experience.

FUTURE MUSEUM EXHIBIT

We created our very own Future Museum gallery in MPM's old Discovery World lobby on the Ground Floor, which opened to the public in October 2022. The reimaged space showcases the building renderings, Wisconsin Wonders fundraising campaign progress, information about the design team, and a small-scale interpretation of the lightwell (see page 18). The gallery was updated throughout 2023 to include the Future Museum's exhibit gallery sketches, and continues to receive miscellaneous updates as progress toward our new home is made.

VIRTUAL TOWN HALL

It's important to continue including our community in the Future Museum process. In November 2022, MPM hosted a virtual public town hall. Around 90 people from the Milwaukee area and beyond joined the discussion. Community members were able to submit questions about the building, exhibits, timeline, and our current Museum, which were answered live. This also provided an opportunity to solicit feedback from the audience about the project, allowing the team to collect further information on people's thoughts and interests.



Jo and Dick Beightol

FUNDRAISING MILESTONE

Mid-year, we reached a Future Museum fundraising milestone of \$128 million raised toward the \$240 million goal. That included \$40 million from the State of Wisconsin, \$45 million from Milwaukee County, and \$43 million in private donations. Of the 200 private donations, we received 20 gifts of \$1 million or more.

Of those generous donors, one couple has a legacy of support and advocacy at MPM. Husband and wife Dick and JoAnn (Jo) Beightol have been involved with the Museum since they moved to Milwaukee in the 1980s. Jo was a docent and served on the Friends of the Museum (FOM) Board. Dick served on the FOM Board as well as the MPM Board, and together they chaired a MPM Gala. Jo currently serves on the Wisconsin Wonders Campaign Committee.

The fundraising total has since swelled as the campaign continues to meet important milestones with great momentum toward the final goal.

THE FUTURE MUSEUM
PROJECT GIVES US THE
**ONCE-IN-
A-LIFETIME**
OPPORTUNITY TO TRANSFORM
OUR INSTITUTION INTO THE MOST
INSPIRING, ENGAGING, AND
RELEVANT MUSEUM OF NATURE
AND CULTURE FOR TOMORROW'S
WISCONSIN AND THE WORLD.

Gallery Reveals

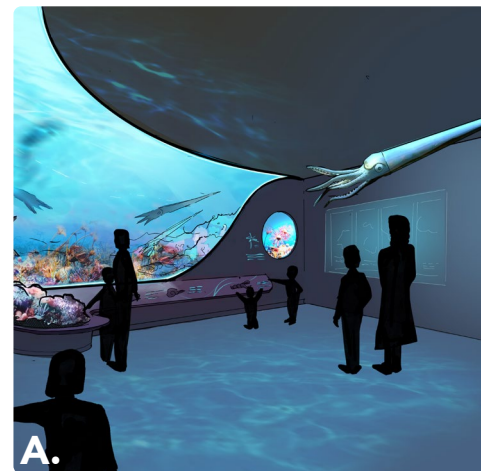
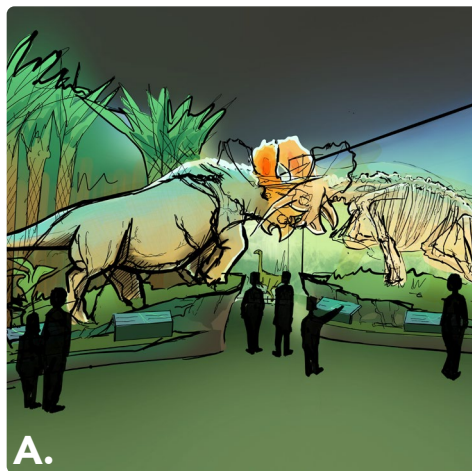
Between March and May, we gave our visitors a glimpse into the Future Museum exhibit design concepts created by Thinc Design. These scheduled reveals were highly anticipated by the public and the media, garnering 120 media hits and more than 110,000 social media impressions, reaching a total audience of 6.75 million people.



Note: When you see this symbol, click to play a video corresponding to the content.

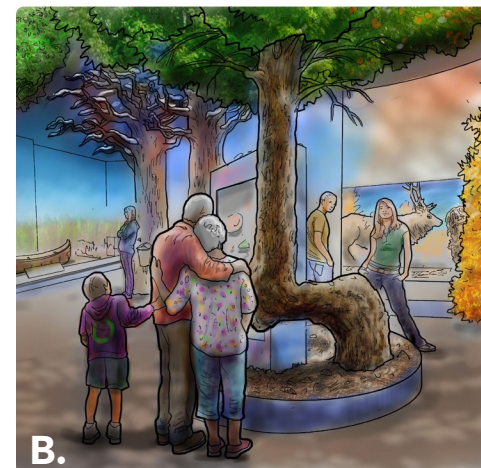
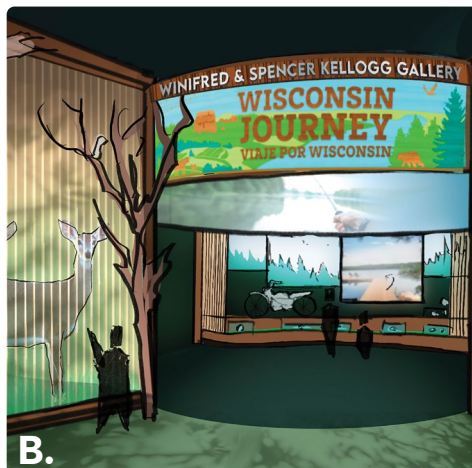
A. TIME TRAVEL

This gallery explores the deep past, including when dinosaurs roamed the Earth, through exhibits focused on three of the planet's geologic chapters: the Paleozoic, Mesozoic, and Cenozoic eras.



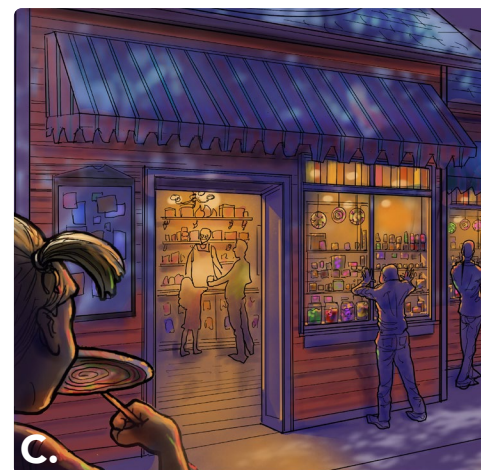
B. WINIFRED & SPENCER KELLOGG GALLERY: WISCONSIN JOURNEY

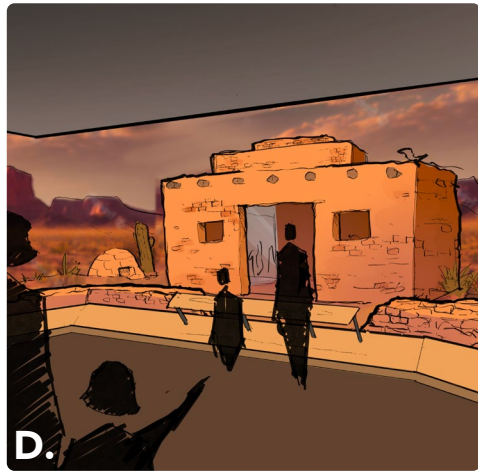
This entire exhibit floor focuses on the geological wonders and strong and varied cultures of Wisconsin – from the Driftless Area to the Northwoods, Apostle Islands, Great Lakes, and Wisconsin's vast prairielands.



C. MILWAUKEE REVEALED

Milwaukee Revealed will immerse visitors in city streetscapes they can explore to learn about the history of Milwaukee, the people who came to settle and live here, and its interconnected systems, neighborhoods, and ecologies (and where future generations of children can get a sweet treat).





D. LIVING IN A DYNAMIC WORLD

In the *Living in a Dynamic World* gallery, visitors will take an unconventional journey to five distinct ecosystems across the globe and be immersed in the landscapes and cultures that occupy them, comparing and contrasting how our environment plays a role in how we function and thrive.

E. NATURE & CULTURE CONNECTORS

The Connectors, including the Burke Foundation Culture Connector, are two spaces that showcase a rotating selection of collection items, offer spaces for public interaction and programming, and turn the Museum “inside out” by providing behind-the-scenes views into the collections storage areas.

F. WE ENERGIES FOUNDATION GALLERY: RAINFOREST

The *Rainforest* will take visitors to the tropics to learn about the biodiversity that flourishes in tropical rainforests and the life rainforest climates support.

G. PUELICHER BUTTERFLY VIVARIUM

The *Vivarium* will welcome visitors into a warm, lush greenhouse thriving with real tropical plants and live butterflies flying freely throughout the space.

H. BUCYRUS ROOFTOP TERRACE

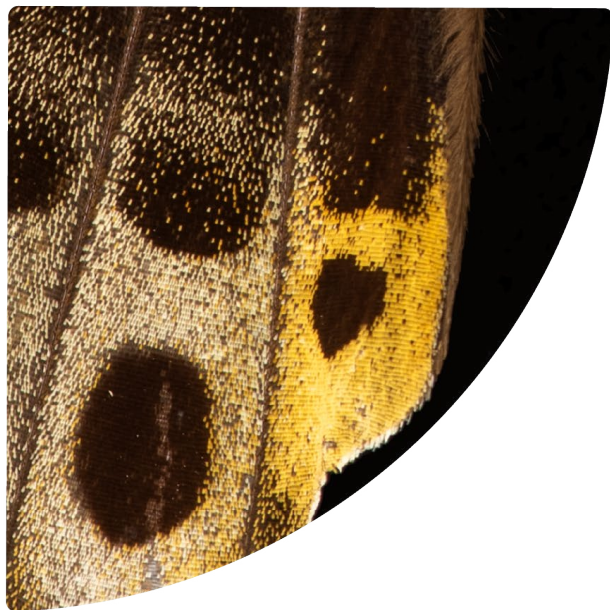
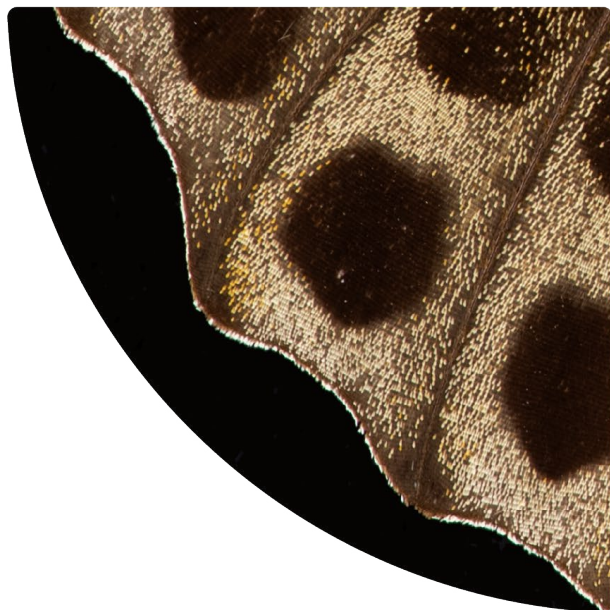
The Terrace will be a gathering space to reconnect visitors to the outdoors and natural world.

Architect's rendering of the lightwell (a five-story skylight) while looking up in the Future Museum Commons.

Designing and building a new natural history museum is a once-in-a-generation project brought to fruition by a team of talented professionals. The Museum's Chief Planning Officer Katie Sanders was named a 2023 Woman of Influence by *Milwaukee Business Journal* in recognition of her leadership on this project. CONGRATULATIONS!



Collections & Research Updates



MPM IS HOME TO
UNIQUE COLLECTIONS
OF MORE THAN
4 MILLION
OBJECTS AND
SPECIMENS IN THE
DEPARTMENTS OF
ANTHROPOLOGY,
HISTORY, BOTANY,
ZOOLOGY, AND
GEOLOGY. ACTIVE IN
RESEARCH
AROUND
THE WORLD,
THE MUSEUM
ENGAGES
WISCONSIN'S
COMMUNITY AND
BEYOND THROUGH
COMMUNITY
SCIENCE
AND INTERACTIVE
PROGRAMMING, BOTH
ONSITE AND ONLINE.



Digitization

Digitizing our collections allows researchers (and the public) to access our collections online around the world. These efforts help advance science and public knowledge and strengthen our global impact. Without MPM's collections serving as a "library of life," much of Wisconsin's ecological history would be unrepresented.

About 2 million specimen records were downloaded in the areas of botany as well as vertebrate and invertebrate zoology.

An exciting community engagement project to bring cultural context to several digitized specimens from MPM's vast insect and plant collections began in the fall of 2022. Museum staff across several departments, including Education, IDEA, Digitization, Anthropology, Zoology, and Botany, are working together to build on what we know about our specimens by incorporating indigenous perspectives into new educational materials and programs.



Purple prairie clover

For example, one of MPM's purple prairie clover specimens was collected in 1909 near the Yellow River in Burnett County, Wisconsin. The plant is native to North America and distantly related to legumes. It was also used by some Native American tribes for healing purposes. Ultimately, this project would serve as a model for how to cooperate with external collaborators on educational programming as well as how to expand the information in MPM's collections database associated with our specimens.



The Geology department digitized more than 4,500 specimen records and took 3,500 specimen photos since MPM and the Field Museum of Natural History were awarded a three-year, \$250,000 grant to digitize 37,000 Devonian fossil collection catalog records in the summer of 2022. Led by **Robert & Sally Manegold Curator of Geological Collections Patty Burke**, the effort will allow the information to be discoverable to researchers, teachers, and students through MPM's online collections management system (EMu).

Annual BioBlitz

Havenwoods State Forest,
June 2023

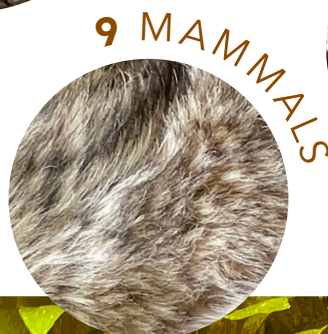
A BioBlitz is part contest, part festival, part educational event, and part scientific endeavor where MPM brings together a group of scientists in a race against time to see how many species they can count in a 24-hour celebration of biodiversity in a designated Wisconsin natural area.

77 surveyors found 797 species

Of those 797 species found, several stood out as special finds—one being the first Wisconsin record of the spider *Ozyptila praticola*, and the other being *Geranium robertianum* ("Herb-Robert"), serving as the first Milwaukee County record of the plant.

MPM educators and 17 partner organizations were also present to interact with the public through:

- Nature walks (bird, butterfly, plant, and river)
- Tactile tables (furs, bones, and more)
- S'mores stations
- Water-related storytelling
- Informational coloring activities
- Interactive maps of water systems
- Natural journaling
- Animal meet-and-greets
- Microscope activities
- Plant pressing
- Pond netting





Permanenet Exhibit Updates

Traveling exhibits aren't the only way to bring new learning opportunities and updated information to the Museum; our permanent collections on display require updates, additions, and replacements.

It's not every day—or decade—that MPM adds a new permanent exhibit. *Native Milwaukee* was added to the First Floor in August 2023. The exhibit highlights 16 archaeological items from MPM's collection that were found in various parts of Milwaukee County as the population grew. The objects span 400-14,000 years ago and came to the Museum between 1888 and 1981. This exhibit shows that Native people have been in Milwaukee for thousands of years.



The Case & Label Project is an effort to change several exhibits by updating labels and removing/covering all human remains we have on display. These decisions were made after discussions with source communities to ensure we are respectfully representing cultures from around the world.

A case in the Second Floor's *Southwest* exhibit was emptied and now displays handpainted lantern slides from MPM's collection. These slides illuminate the lifeways of Indigenous peoples of the North American Southwest and showcase the artistry of the women of MPM who handpainted them. (See page 26.)



In the summer of 2023, MPM covered up the Peruvian mummies window in the Third Floor Mezzanine as part of our ongoing effort to update exhibits to be more culturally sensitive and appropriate. Plans to update other windows containing human remains are currently in progress.

With the help of an Arctic advisement group, we created and installed an introductory panel in the Third Floor Arctic gallery. This past year, a cultural, immersive map went into the exhibit showing the traditional language distribution across the Arctic; visitors can scan a QR code to view updates made to those areas by other Arctic research/advisement groups and associated peoples.



Trailblazers

Chris Tyrrell, PhD

In late 2022, MPM Curator of Botany Dr. Chris Tyrrell and his colleagues identified a new species of bamboo, *Rhipidocladum singuliflorum*, in Puerto Vallarta, Mexico.

In early 2023, Dr. Tyrrell traveled to Trinidad and Tobago to conduct fieldwork on both the native and introduced species of bamboo that grow on the islands in an effort to assess the population size and location of the plants.

In summer 2023, Dr. Tyrrell helped lead plant collections efforts at the Wisconsin Botanical Foray in Marinette County, an event led by the UW-Madison Herbarium and Wisconsin Botanical Club in collaboration with scientists from various institutions. The teams visit natural habitats in the selected region where they learn about plant diversity and species identification, and how to make museum plant specimens.

Aaron Atencio, PhD

In October 2022, MPM's Curator of Cultural Sciences Dr. Aaron Atencio was appointed Honorary Research Fellow by UW-Milwaukee's Anthropology department. This appointment helps connect him with prospective researchers who may share similar interests in his research on visual methods and theories.

From top: C. Tyrrell, A. Atencio, J. Zaspell, N. Dowdy



Jen Zaspell, PhD

In summer 2023, Dr. Zaspell taught the NSF-funded entomology collections management workshop at the Cleveland Museum of Natural History with staff from the Smithsonian (50 students from around the globe). The overarching goal was to broaden participation for collection managers and students, especially those associated with small collections, who may have limited resources to curate and digitize their holdings. She will continue developing this workshop into a series of dynamic resources to serve the systematics community, as well as other research communities that rely on physical specimens or their digitized data, and the public.

Nick Dowdy, PhD

In March 2023, Dr. Dowdy, Zoology Research Curator & Director of Collections Informatics, presented his findings on tiger moths' ability to disrupt bat sonar to avoid detection as part of the Thomas C. Emmel Seminar Series at the McGuire Center for Lepidoptera and Biodiversity. This lecture, hosted by the Florida Museum of Natural History/University of Florida, invites top researchers who are working on butterfly and moth research to speak to students, faculty, researchers, and the general public.

Research Fellows

We welcomed the following Rundblad Research Fellows in FY23:

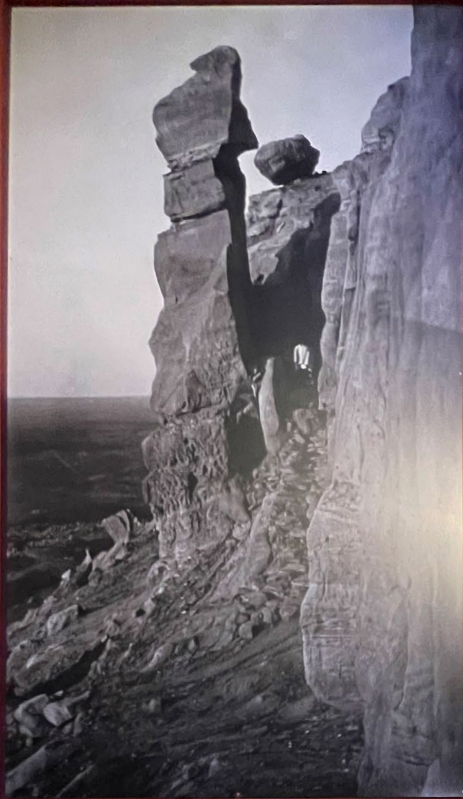
Dr. Michael Pauers

"Population Dynamics and Genetic Diversity of a Captive Population of the State Threatened Northern Sunfish, *Lepomis peltastes*: A Citizen Science Approach to Conservation"

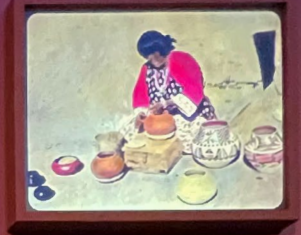
Dr. Keir Wefferling

"Peatmosses (Genus *Sphagnum*, Sphagnaceae) of Wisconsin"

Southwest, 2nd Floor; updated exhibit with lantern slide close-ups below.



INDIGENOUS PEOPLES OF THE NORTH AMERICAN SOUTHWEST



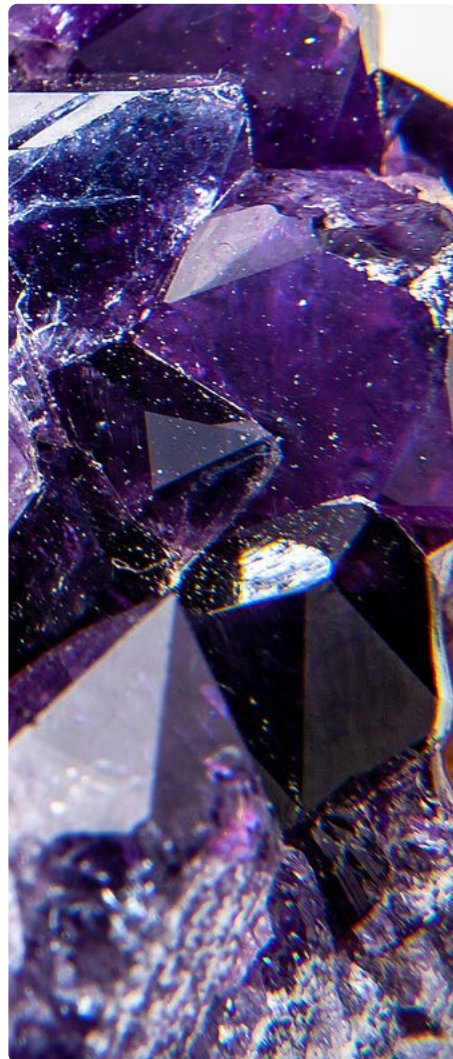
Below the old and above the new of the indigenous peoples of the Southwest, the exhibit features a series of lantern slides and a map of the Southwest Indigenous Territories.

Indigenous Peoples of the Southwest

The exhibit features a series of lantern slides and a map of the Southwest Indigenous Territories. The slides show various aspects of indigenous life, including pottery, weaving, and traditional clothing. The map highlights the Southwest Indigenous Territories in orange.



Inclusivity, Diversity, Equity, & Accessibility



MPM STRIVES TO
BE INCLUSIVE, DIVERSE,
EQUITABLE, AND ACCESSIBLE TO
ALL VISITORS, REGARDLESS OF CULTURAL,
FINANCIAL, OR PHYSICAL BARRIERS. THE
MUSEUM IS DEDICATED TO CONTINUOUSLY
COLLABORATING ON PROGRESSING THAT
WORK, AS ONE OF THE STATE'S LONGEST-SERVING
INSTITUTIONS, THROUGH A TRADITION OF FOSTERING
LEARNING, DIALOGUE, AND SELF-REFLECTION IN A
SAFE AND WELCOMING ENVIRONMENT TO
ALL PEOPLE.

11,265

Museums for All
program participants*

8,600

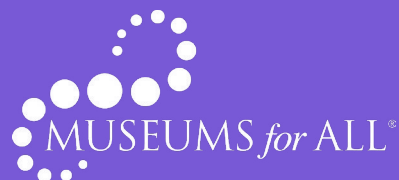
Words translated into
Spanish for signage,
programs, and resources

688

Affordable Adventure
memberships

80

SPARK! program
attendees**



*Through this program,
those receiving food
assistance (SNAP benefits)
can gain free or reduced
admission to more than
500 museums throughout
the United States simply by
presenting their EBT card.



SPARK!

**SPARK! programs are
designed for people in
the early-to-mid stages
of memory loss to visit
with their family and care
partners.

In the Community

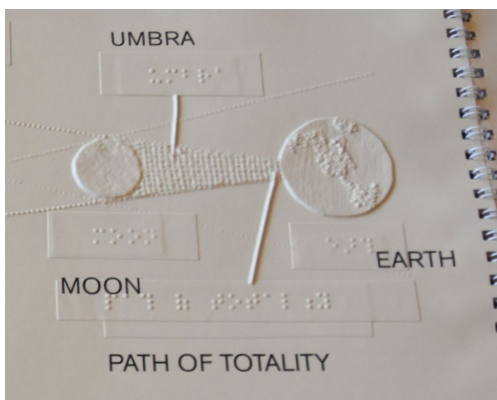
- In the fall of 2022, MPM joined the LGBT Chamber of Commerce.
- In December 2022, the City of Milwaukee Equal Rights Commission and the United Nations Association of Greater Milwaukee presented MPM with an Equality Award during the 2022 International Human Rights Day Celebration. MPM received the honor in the Community Organization category for the Museum's commitment to accessibility and inclusion.
- More than 500 museum staff/volunteers nationwide received training on inclusion and the laws of the Americans with Disability Act through conference presentations and in-person trainings.
- MPM began hosting quarterly DEI Community Conversations that provide networking and brainstorming with other area nonprofits around best practices in diversity, inclusion, equity, and accessibility.
- MPM was accepted as a Milwaukee Community Schools Partnership program partner and hired a staff member who works full-time in the Oliver Wendell Holmes School supporting the teachers, families, and students and creating educational connections to our collections and educational resources.
- Islands of Brilliance is a local organization that supports students with autism. MPM was one of four destinations in Milwaukee for their summer Sandbox Camp. Students learned about museums and used our exhibits for activities.



Nature journals translated into Spanish

At the Museum

- In May 2023, approximately 100 people participated in the 21st Annual Braille Games at MPM. This year's theme was astronomy: Students from K5-12 joined adult blind mentors in learning about the planets and even launched rockets, wrote short stories about aliens on a braille typewriter, and explored the surface of the moon with 3D-printed tactiles and books provided by NASA.

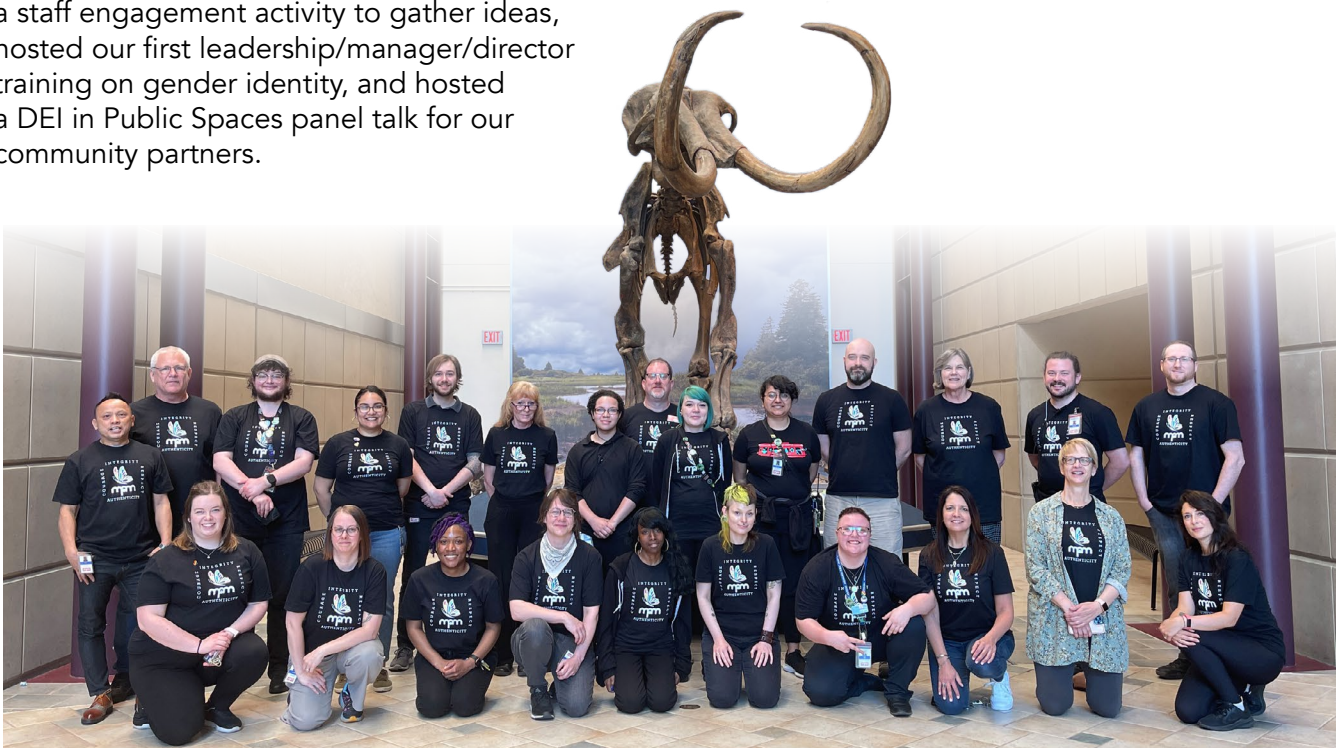


- We made great strides during Pride Month this fiscal year. In addition to posting to social media and distributing rainbow pins like past years, we launched our Diversity T-shirt with a group staff photo (see below) that was shared on social channels, provided a staff engagement activity to gather ideas, hosted our first leadership/manager/director training on gender identity, and hosted a DEI in Public Spaces panel talk for our community partners.

- MPM is dedicated to being a diverse and inclusive place of employment that supports staff and volunteers. Two internal committees were created this fiscal year:
 - The IDEA Committee's focus is on creating institutional change through advising on new policies, offering training, connecting with the community, and focusing on staff support.



- The Employee Engagement Committee was formed to organize inclusive activities and outings for all staff. The first, a trivia night, took place in May 2023; the second was a river cruise in July 2023.
- The internship program was revamped throughout the year. The new model focuses on providing paid opportunities for students and recruiting to a more diverse pool of students.



*Braille Games participant using
a braille typewriter.*



Education, Events, & Programs



MPM'S EDUCATION INITIATIVES ARE CRAFTED WITH ITS VISITORS IN MIND: THOSE CURIOUS ABOUT BOTH CULTURE AND THE NATURAL WORLD, **READY TO EXPLORE** THROUGH VARIOUS LENSES. THE PAST YEAR, MPM ALSO WELCOMED BACK SCHOOL GROUPS FOR FIELD TRIPS.

COMMUNITY OF CURIOSITY

27,952 in-person visitor engagements and **22,312 digital** interactions

Community of Curiosity offered onsite Museum programming, at-home activities and videos, and special events.

Tortoise shell artifact, one of the objects featured for Inside Out.



FIELD TRIPS

39,653 students with their chaperones visited MPM on a school field trip.



Visiting with creepy crawlies at Halloween Hauntings.

MEMBER EVENTS

Halloween Hauntings is a bewitchingly fun family event with activities like trick-or-treat, ghost tours, and more.

Inside Out allows MPM members to view rare—and rarely seen—collections objects. These two member-favorite events together welcomed **5,700 attendees**.

DOCENT TOURS

536 visitors attended **42 docent-led** public Museum tours.

3,321 students attended **126 docent-led** Museum tours during field trips.

LEARN WITH AN EXPERT

Served **5,469 students virtually**. This live-streamed program connects classrooms with real experts in scientific and cultural fields.

MPM ON THE MOVE

Served **6,731 people** at schools and community organizations across 12 counties, including one new Wisconsin county (Sawyer).

Our outreach program, MPM on the Move, seeks to improve scientific and cultural literacy through both formal programs and events with community partners. New audiences will experience traveling or virtual Museum programming that inspires curiosity and excites minds! MPM on the Move has something for everyone and can be adapted for different age groups.

MUSEUM VOLUNTEERS

98 volunteers gave **4,983 hours** across five departments.

SUMMER CONNECTIONS

Served **493 kids** by providing free educational outreach as well as access to the Museum and pop-up activities for K-8 students across six Milwaukee youth organizations.

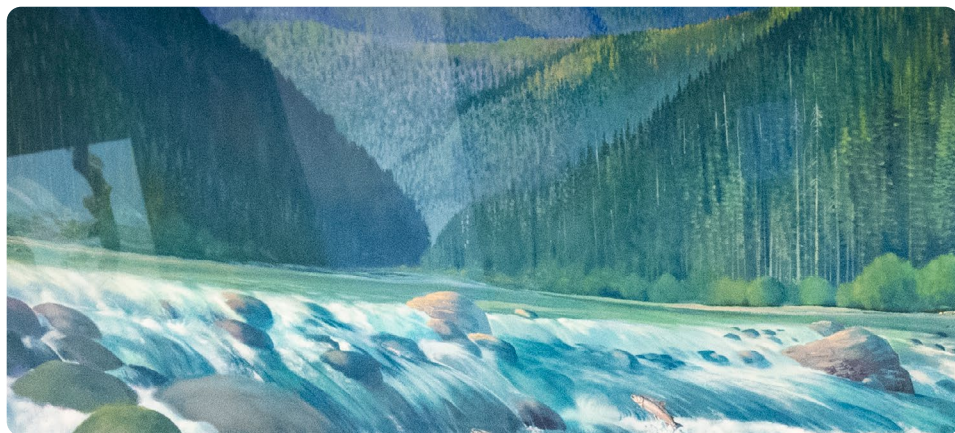
Each year, MPM's Education department coordinates with community resource centers in under-resourced areas to provide summer engagement to students during the summer months with the goal of connecting our community with our mission, connecting youth with their natural world, and connecting families through learning. Each participating student receives a year-long family membership to continue exploring the Museum.



MPM on the Move theme featured on program vehicles and materials.



Financials & Giving



YOU KEEP MPM GOING.

NOTHING HERE WOULD BE
POSSIBLE WITHOUT DONORS,
MEMBERS, VISITORS, STAFF,
VOLUNTEERS, OR COMMUNITY.
THANKS FOR ALL YOU DO!

ANNUAL GALA

MPM's fall 2022 Annual Gala "Building Wonder" set a fundraising record! About **370 guests** attended the event, which raised more than \$600,000—a net gain of about **\$460,000**. This surpasses the previous gala record by more than \$100,000!



23RD ANNUAL FOOD & FROTH

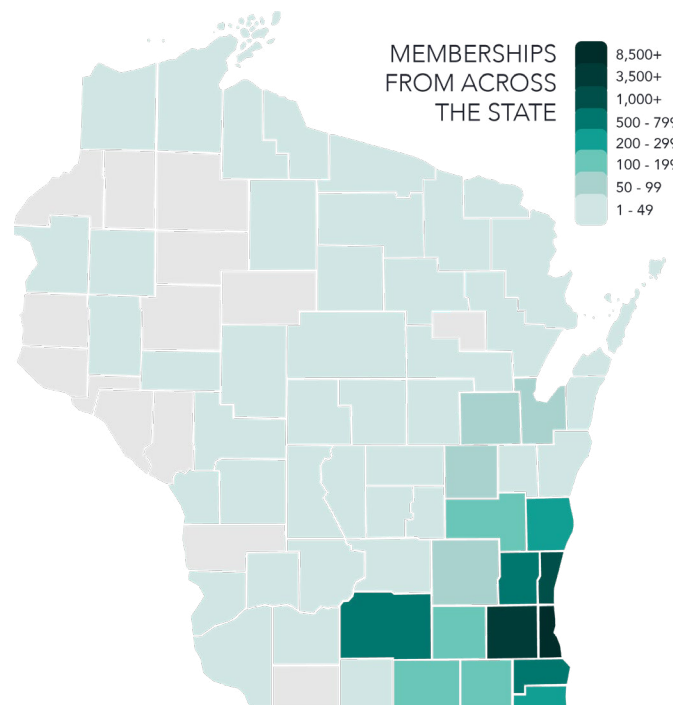
This popular fundraiser returned in March 2023 after a two-year hiatus post-pandemic. More than **1,800 people attended** and about 80 vendors participated in the sold-out event. Guests sampled brews and bites throughout the exhibit floors while listening to live music and winning raffle prizes. The event raised nearly **\$191,000**.



MEMBERS

As of August 31, 2023, MPM had **11,313** members. You are the heartbeat of MPM, and we greatly appreciate your continued support.

MPM members come from **80%** of Wisconsin's counties -- from Milwaukee to Door County, to the Northwoods and beyond!



GIVING DAY

THANK YOU to all who contributed to MPM's Giving Day on April 27, 2023!





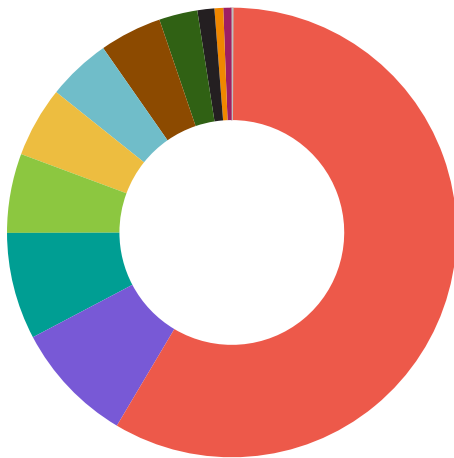
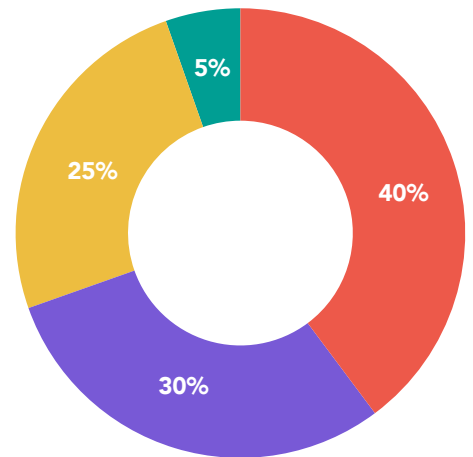
Financials

SUPPORT AND REVENUE BY SOURCE

- Contributions & Membership
- Public Support
- Earned Revenue
- Other (Released from Restriction)

TOTAL REVENUE

	Fiscal Year 2022	Fiscal Year 2023
Contributions & Membership	\$8,179,578	\$5,573,406
Public Support	\$3,505,668	\$3,506,741
Earned Revenue	\$4,001,542	\$4,174,431
Other (Released from Restriction)	\$806,998	\$754,096
TOTAL REVENUE	\$16,493,786	\$14,008,674



MUSEUM DEPARTMENT OPERATING EXPENSES

	Fiscal Year 2022	Fiscal Year 2023
Cost of Goods Sold	\$371,628	\$394,657
Supplies & Subscriptions	\$833,735	\$723,547
Wages & Benefits	\$7,359,023	\$8,365,828
Travel	\$91,805	\$90,085
Insurance	\$69,378	\$71,632
Marketing/Donor Development	\$601,566	\$639,593
Maintenance	\$786,989	\$653,607
Utilities	\$1,004,738	\$1,097,977
Professional Fees	\$1,040,875	\$1,249,284
Miscellaneous/Sales Tax	\$171,820	\$174,367
Donated Services Used	-	-
Subtotal Museum Departments	\$12,331,557	\$13,460,577
Interest Expense	\$1,059	\$15,259
Depreciation	\$867,344	\$814,263
Total Operating Expenses	\$13,199,960	\$14,290,099
Unrestricted Net Operating Income (Loss)	\$3,293,826	\$(281,425)

NON-OPERATING INCOME

Pension & Retiree Benefits Gain/(Loss)	\$455,018	\$13,657
Other	\$(493,019)	\$448,703
Change in Non-Operating Net Assets	\$(38,001)	\$462,360
Restricted Net Asset Activity	\$181,924	\$5,834,610
Total Change in Net Assets	\$3,073,901	\$6,015,545

CONSOLIDATED STATEMENT OF FINANCIAL POSITION

TOTAL ASSETS	\$26,053,122	\$31,626,526
TOTAL LIABILITIES	\$6,072,219	\$5,630,078
TOTAL NET ASSETS	\$19,980,903	\$25,996,448

Find the Milwaukee Public Museum IRS Form 990 at www.mpm.edu/annual-report.

2022-2023 Giving

THROUGH EXHIBITIONS,
EDUCATIONAL PROGRAMS,
COLLECTIONS, AND
RESEARCH, MPM INSPIRES
CURIOSITY, EXCITES MINDS,
AND INCREASES THE
DESIRE TO PRESERVE AND
PROTECT OUR WORLD'S
NATURAL AND CULTURAL
DIVERSITY.

WITH THE GENEROUS
SUPPORT OF OUR DONORS,
MPM BRINGS THE WORLD
TO THE RESIDENTS OF
WISCONSIN AND BEYOND.
THE STEWARDSHIP OF
YOUR GIFTS IS OF UTMOST
IMPORTANCE TO US,
AND WE ARE SINCERELY
GRATEFUL TO EACH AND
EVERY DONOR.

INDIVIDUALS, FAMILY FOUNDATIONS, AND PRIVATE PHILANTHROPIC FOUNDATIONS

The Museum recognizes donors
listed below whose gifts of
\$2,500 or more were received
between September 1, 2022 and
August 31, 2023.

Exceptional Annual Support Milwaukee County

\$100,000 - \$499,999

The Lynde & Harry
Bradley Foundation
Leona Fitzsimonds
Four-Four Foundation, Inc.
Melitta S. & Joan M. Pick
Charitable Trust

\$50,000 - \$99,999

Anonymous

Tony & Vicki Cecalupo
Greater Milwaukee Foundation
Helen & Jeanette Oberndorfer Fund
Herzfeld Foundation

Jerome J. & Dorothy H. Holz
Family Foundation

Candy & Bruce Pindyck
David & Julia Uihlein

\$25,000 - \$49,999

Anonymous (2)

JoAnn & Richard Beightol
Lynn & Douglas Brengel
Carol A. Carpenter
Ellen J. Censky**
Karen J. Glanert
Charitable Trust



Greater Milwaukee Foundation
KPA Fund II

Patti & Jack McKeithan
Northwoods Fund

Krause Family Foundation, Inc.
Kirsten Olson & Collin Johnson
Mary & Ross Read
Michael Van Asten

\$15,000 - \$24,999

Anna R. & Kris Baritt

Theodore W. Batterman Family
Foundation

Greater Milwaukee Foundation
Judith A. Keyes Family Fund

Margarete & David R. Harvey
Evan & Marion Helfaer Foundation
Laskin Family Foundation
Camille A. Lonstorf Trust
Meier Family Foundation
Schoenleber Foundation, Inc.

Victoria & Charles Wright, Jr.
Carol K. Wythes

\$10,000 - \$14,999

Anonymous (2)

Anon Charitable Trust
Antonia Foundation
Sharlene & **Tim Byrne**
Joan & Fred Brengel
Family Foundation, Inc.
Amy & Kenneth F. Brengel
Edith Brengel Radtke
Mary Mohrhussen Dittmar*
P.J. DiStefano & Dustin Hutter
Mike & Kelly Findley
Greater Milwaukee Foundation
Donald & Barbara Abert Fund
Norman & Lucy Cohn Family Fund
Mary Jane Ziska Memorial Fund

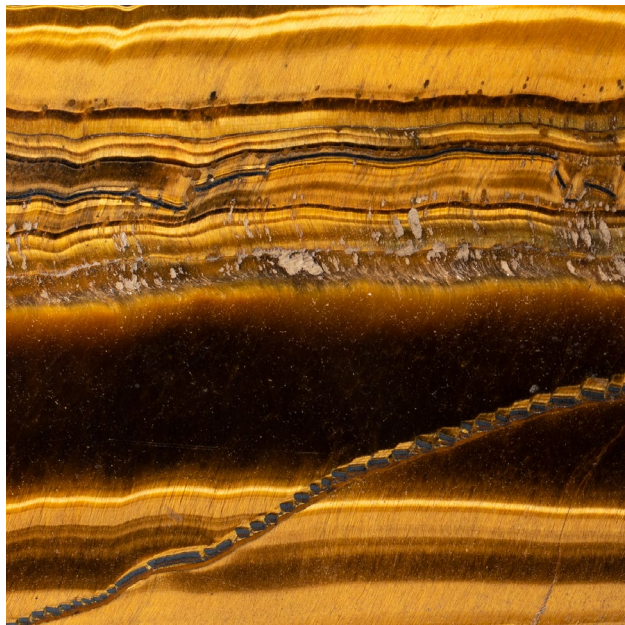
Linda & Michael Groth
Hauske Family Foundation
Harri Hoffmann Family
Foundation, Inc.
John Idzikowski & Jane Stoltz
Ted & Mary Kellner/
The Kelben Foundation, Inc.
Herb Kohl Philanthropies
Sheldon & Marianne Lubar
Gerald & Elaine Mainman
John & Linda Mellows
Charles D. Ortgiesen Foundation
Joel & Margo Plant
Robert Spoerl
Gloria Stanford
Jane Bradley Pettit Foundation
Stackner Family Foundation, Inc.
Todd & Elizabeth Krieg
Jean Whitmore*
The Yabuki Family Foundation

\$5,000 - \$9,999

Paco & Betty Aguilar
 Amy & Ken Aldridge
Jason Allen & Jessica Lochmann Allen
 Donna & Donald Baumgartner
 Anthony & Priscilla Beadell
 Abigail & Jonathan Bloom
 Brookbank Foundation
 Elaine Burke
 Bill & GERALYN Cannon
 Clarence Chou
 Mr. & Mrs. Thomas J. Degnan
Peter & Natalia **Feigin**
 Four-Four Foundation, Inc.
 Greater Milwaukee Foundation
 Bernadine & Stephen Graff Fund
 Claire and Robert Pfleger
 Charitable Fund
 Roller Family Fund
 Aaron & Anita Tilton Family Fund
 William N. & Janice V. Godfrey
 Family Foundation Trust
 Ann & Jon Hammes
 Harbeck Family Foundation
 Michael & Susan Hedrick
 Jenny & Bob Hillis
 Genevieve Hillis & Brian Kocinski
 James & Karen Hyde Foundation
Nik & Kelly **Ivancevic**
Angie & Kevin **Izard**
Corey & Ann **Jaskolski**
 Mary & Charles Kamps
 Mary Ann & Charles P. LaBahn
 Madeleine & David Lubar
 Charitable Fund
 Joan Lubar & John Crouch
 Carter Lupton**
 Peter L. Mahler/Mahler Enterprises
 Maihaugen Foundation
 Kenneth & Maureen Manning
 Karen McDiarmid
 Carol J. Miller*
 Jim & Janet McKenna
Thad Nation & Dr. Anna Varley
 Paul Nausieda* & Evonne Winston
 George & Karen Oliver
 Suzanne & Richard Pieper
 Susan & Stephen Ragatz
 Gayle Rosemann & Paul McElwee
 Andi & Jim Schloemer
 Richard & Linda Stevens
 Teerlink Family Foundation
 Anne & John Thomas
J.J. Weis
Jay** & Madonna **Williams**
 Evonne Winston & Paul Nausieda*
 Shir-Lee H. Zilis

\$2,500 - \$4,999

Anonymous
 Charles & Dorothy Aring Charitable
 Remainder Trust
 Celeste & Glen Arnold
 John Blimke, Ph.D.
 Art & Anne Brooks
 Evelyn & Gabe Ceci
 Nicole & Jack Cook
 Sue & Curt Culver
 Lynda & Tom Curl
 Robert M. Davis
 D F Foundation Inc.
Ethan & Candice **Elser**
Joshua Erickson & Amanda Retberg
 Barbara Nitchie Fuldner
 David & Velma Geraldson
 Greater Milwaukee Foundation
 Anthony & Andrea Bryant
 Family Fund



Henry C., Eva M., Robert H., and
 Jack J. Gillo Charitable Fund
 Susan & Howard Hopwood Fund
Richard & Maribeth **Meeusen**
 Charitable Fund
 Andrew & Diane Harmening
 Heil Family Foundation
 Susan Hoaglund
 William Honrath & Elizabeth Blackwood
 Winnie R. Huebsch, Ph.D.
 John & Marci Hunzinger
 Richard G. Jacobus Family Foundation
 Jewish Community Foundation
 Burton & Audrey Strnad Fund
 Leander & Susan Jennings
 Mark & Ginny Kannenberg
 Grant & Carrie Killoran

Ruth I. King
 Kolaga Family Charitable Trust
 Sarah & Bradley Komisar
 Harry A. Nunnemacher
 Heath A. Nunnemacher
 Diane K. O'Connor
 Eloise & James Paloucek
 Janice & Raymond Perry
Brad & Robin **Peters**
 Jane C. Podemski
 Pollybill Foundation, Inc.
 Julie Quinlan Brame** & Jason Brame
 Donna R. Recht
 Roberta & David Remstad
 Amy Rickmeier & Matt Schmidt
John & Rachel **Roberts**
 Rowe Family Foundation, Inc.
 Annerose Scrimenti
 Gary Smieja & Connie Julson
 Beverly Smiley
 Carol L. Stephenson
 Frederick P. Stratton, Jr.
 Audrey J. Strnad
Mike Tate & Raisa Koltun
 Susan & Stacey Terris
 Kate & Tom Tuttle
 United Way of Greater Milwaukee &
 Waukesha County
 Sue & Curt Culver
 Bonnie Vick
 Family of Jim and Libby Wigdale*
 Allen M. Young, Ph.D.**

*Deceased

**MPM Staff & Former Staff

**Names listed in bold denote
 members of the HHM, MPM, and
 WMNC Board of Directors**

CORPORATE CLUB

The Museum recognizes the following corporations and corporate foundations whose gifts of \$1,000 or more to the present Museum were received between September 1, 2022 and August 31, 2023.

\$100,000 - \$499,999

Kohl's
Northwestern Mutual Foundation

\$50,000 - \$99,999

Rockwell Automation

\$25,000 - \$49,999

Baird
Johnson Controls Foundation
Komatsu Mining Corp.
Midwest Fiber Networks & CableCom
Mortenson
Potawatomi Casino Hotel
U.S. Bank Foundation

\$15,000 - \$24,999

Associated Bank Foundation
HUSCO
Northern Trust

\$10,000 - \$14,999

A.O. Smith Foundation
BMO Harris Bank
Bank of America
Brewers Community Foundation
Bucyrus Foundation
Charter Manufacturing Company
Foundation
Church Mutual Insurance
Company, S.I.
Fiduciary Real Estate
Development, Inc.
Generac Power Systems
Geraci & Associates
Holz Motors, Inc.
Ladish Foundation

\$5,000 - \$9,999

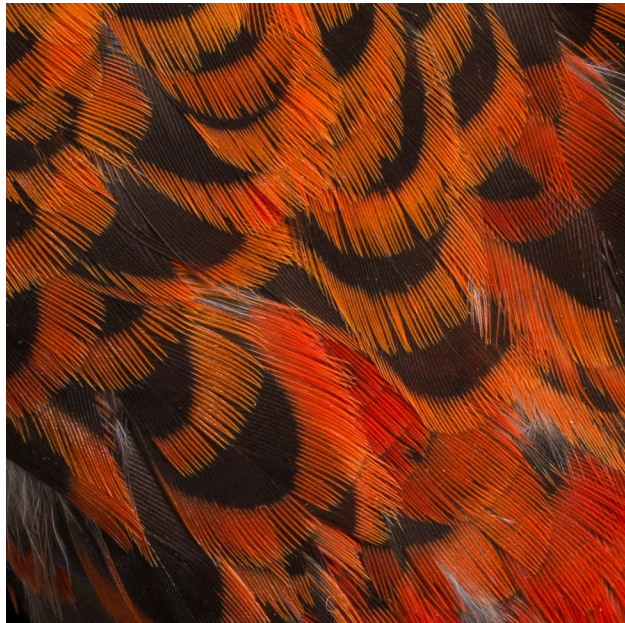
Baker Tilly
Deloitte
Ennead Architects
Kahler Slater
Mueller Communications LLC
PPG
Pieper Electric, Inc./Ideal Mechanical
Zilber Ltd.

\$2,500 - \$4,999

Bostik, Inc.
DigiCOPY
Foley & Lardner
Hunzinger Construction Company
Kikkoman Foods Foundation, Inc.
Liphatech, Inc.
Materion
Strattec Security Corp.
von Briesen & Roper, s.c.

\$1,000 - \$2,499

Ardent Mills LLC
Avidity Science, LLC
Catholic Financial Life
Greater Milwaukee Foundation
Kalmbach Media Co. Fund
HGA
Hupy and Abraham, S.C.



InPro Corporation
KAPCO, Inc.
Mead Public Library
Milwaukee Plate Glass Company
Standard Electric Supply Co.
Trackside Services, Inc.
Uline
Usinger's Famous Sausage
Vulcan Global Manufacturing Solutions
Walker Forge Inc.
Weldall Manufacturing, Inc./
David L. Bahl
West Bend Mutual
Insurance Company
Weyco Group

HHM

Special thanks to the following MPM Cornerstone Donors, making the unveiling of our Future Museum possible. Cornerstone Donors are those who have made a significant early gift commitment to the Future Museum's Wisconsin Wonders campaign by August 31, 2023.

\$10,000,000 or more

The Kellogg Family Foundation

\$2,500,000 - \$4,999,999

Bucyrus Foundation
Melitta S. & Joan M. Pick Charitable Trust
Herzfeld Foundation
Daniel M. Soref Charitable Trust
David & Julia Uihlein
We Energies Foundation

\$1,000,000 - \$2,499,999

Anonymous (3)
Associated Bank
JoAnn & Richard Beightol
Lynn & Douglas Brengel
Burke Foundation
Curtis L. Carter & Jean E. Carter
Culver's Restaurant and Culver Family
Four-Four Foundation, Inc.
Hauske Family Foundation
Evan & Marion Helfaer Foundation
Christy & Aaron Jagdfeld
Nicholas Family Foundation
Northwestern Mutual Foundation
Puelicher Foundation
Mary & Ross Read
Kim & John Schlifske Family Foundation

\$500,000 - \$999,999

American Family Insurance
Brico Fund
Roy Fried*
Greater Milwaukee Foundation
Judith A. Keyes Family Fund
Margarete & David R. Harvey
Jerome J. & Dorothy H. Holz
Family Foundation
Howard & Susan Hopwood
Mary Ann & Charles P. LaBahn
Gerald & Elaine Mainman
Peck Foundation, Milwaukee Ltd
Candy & Bruce Pindyck
Gayle Rosemann & Paul McElwee
Teerlink Family Foundation
Lowell Warshawsky*
Jay & Madonna Williams**

\$250,000 - \$499,999

Anon Charitable Trust
Anonymous
Anthony & Priscilla Beadell
Tony & Vicki Cecalupo
Craig Culver
Curt & Sue Culver Family Foundation
Culver's Franchising System, Inc.
Greater Milwaukee Foundation
Luedke Smith Fund
Susan & Leander Jennings and Family
Jewish Community Foundation
Gerald & Louise Stein Family Fund
Ted & Mary Kellner/
The Kelben Foundation, Inc.
Candy & Bruce Pindyck
Charles Earl Seraphine*
Louise & Gerald Stein Family
Michael Van Asten
Victoria & **Charles Wright, Jr.**



\$100,000 - \$249,999

A.O. Smith Foundation
Anonymous
Elizabeth Blackwood & William Honrath
Steve & Melanie Booth
Anthony & Andrea Bryant
Elaine Burke
Sharlene & **Tim Byrne**
Lynda & Tom Curl
P.J. DiStefano & Dustin Hutter
Arthur J. Donald
Family Foundation, Inc.
Art & Rhonda Downey
Mary & Dan Druml
Ralph Evinrude Foundation
Rob Gardenier & Lori Morse
Steve & Bernie Graff
The Grams Family Foundation
Linda & Michael Groth
Frieda & William Hunt Memorial Trust

Josh & Megan Jeffers

Jim & Janet McKenna
Richard & Maribeth Meeusen
David & Marion Meissner
John & Linda Mellowes
Northern Trust
Kirsten Olson & Collin Johnson
Janice & Raymond Perry
Stackner Family Foundation
Mary Ellen & Scott Stanek
Olive I. & Eunice J. Toussaint Foundation
Wisconsin Public Service Foundation
Jill & Andrew Wright
Charles F. Wright, Sr.
Carol K. Wythes

Up to \$99,999

Jason Allen & Jessica Lochmann Allen
Dr. William & Janis Annesley
Anonymous (4)
Bader Philanthropies, Inc.
Baird
Michael and Sharon Banach
Barb's Green House
Jennifer Bartolotta
Clair & Mary Baum
Stephen & Barbara Becker
Laura Beldavs & Jeffrey Sommers
David & Suzy Boerke
Larry Bonney
Anne Booth & Charles Trainer
Gail M. Boym**
Jacqueline Boynton
Mary Brass
Brenner/Ostrosky Charitable Fund
Rick Brewer
Benny & JJ Brojde
Art & Anne Brooks
Diane & David Buck
Lindsey & Brian Burghardt
Thomas Callan
Elisa Castellon & Richard Birch
Ellen J. Censky**
Karin & Phillip Censky
John R. Chandler Family Fund
Nancy Coyle
Kay & John Crichton
Ann Crump
Craig and Karen Dickman
Michael Dillon
Elizabeth Elser Doolittle Charitable Trusts
Ethan & Candice Elser
Joshua Erickson & Amanda Retberg
Ettinger Family Foundation
Peter & Natalia Feigin
Elizabeth & Ryan Fitzgerald
Kathryn Forecki
Alec & Kristin Fraser
Thomas & Marilyn Frenn

Ivan & Gigi Gamboa

Jeffrey Gosseck

Adrienne & **John Grunau** Family

Mike & Eli Guzniczak

Doug & Meg Haag

Michael & Jenna Haeberle

Sandra Halm

Lue Hang** & Kathy Lee-Hang

Susan & John Harrington

Matthea Harvey & Robert Casper

Judy & Jack Hearst

Charles & Susan Henderson

Chris Her-Xiong

Jenny & Bob Hillis

Patricia Hoben & Charles Carter

Marcia Hoebreckx

Holz Motors, Inc.

Rita & Phillip Hulstedt

Dorothy Inbusch Foundation

Dr. Lyle Ignace & Deborah Black Ignace

Angie & Kevin Izard

Rob & Sarah Jansen

Nancy E. Janson

Corey & Ann Jaskolski

Jewish Community Foundation

Bruce & Diane Keyes Fund

Lisa P. Just

Louis & Ann Kaiser

Steven & Suzette Kappes

Cynthia & Cal Kasper

Linda & Mike Katz

Bruce & Diane Keyes

Gustav & Gladys Kindt Foundation

Steven & Kirsten Klug

Koeppen-Gerlach Foundation, Inc.

Kolaga Family Charitable Trust

Krause Family Foundation, Inc.

Roger Krawiecki

Joan Kunicki

Natalie & Robert J. Lannan, Jr.

James & Kaye Leszczynski**

Todd Levine & Kerri Wrinn

Jeffery Dain Maddox

Michael S. Maistelman

Lu Majeski

Drs. Brent & Susan Martin

John McGivern & Steven Brandt

Deb McKeithan-Gebhardt & Jack

Gebhardt Charitable Fund

Sara Meaney & Brian Fey

Meier Family Foundation

Daryl & Rita Melzer

Jessica & Adam Miller

Richard & Karen Mollenhauer

Paula & Michael Moore

Mortenson

Douglas & Kathleen Nalbert

Thad Nation & Dr. Anna Varley

Greg Nickerson

John & Celeste Olson

Lois & Richard Pauls

Lisa** & James Pieper

Suzanne & Richard Pieper

John & Mary Pierson

Joel & Margo Plant

Julie Quinlan Brame** & Jason Brame

Radler Foundation for Innovation

and Education

Meyer and Norma Ragir Foundation

Gerard A. Randall, Jr.

Joanne & Gus Ricca

Tom & Lynn Richtman

John & Rachel Roberts

Kathleen E. Roberts

Anne & **Don Robertson**

Gary D. Rosenberg

Rosenmayer Family Fund

Robert Rothacker & Connie Gavin

Rowe Family Foundation, Inc.

Patricia A. Santilli & Ronald D. Santilli*

Patrick Schelble & Sally Callan



Margaret T. Schell**

Martin & Elaine* Schreiber

Lisa & Todd Schubring

Elizabeth Schuldt

Patricia P. Seidel*

Sandra Shaw

Francie Luke Silverman Foundation

Suzanne & Myron Simonar

Tom Simpson

Beverly Smiley

Katherine M. Smith*

Traci & Donald Smith

Roselyn M. Smolej-Hill**

Nancy C. Snyder

Tim & Patty Stark

Leslie Starr

Dr. William Stathas & Judy Holz Stathas

Randy & Luci Staudacher

Caroline Stearns

Bert L. & Patricia S. Steigleder

Charitable Trust

Barbara Stein

Stephanie Sue Stein

John & Sherry Stilin

Jacquelyn & Way Thompson, Jr. Family

Morgan Treis

Dr. & Mrs. Robert Truitt

The Valentine Fund

Marcia & Kent Velde

Becky & Dennis VerBunker

Dawn & Clark Wantoch

David Weingrod &

Theresa Rybold Weingrod

J.J. Weis

Mark & Anne Weitenbeck

Sue Wiechmann

William Stark Jones Foundation

Kevin & Kristina Wright

Daniel Yunk & Kathryn Hagist Yunk

Patty Yunk & Bill Mollenhauer

Donna & James Zarek

Paula & Raymond Zwiebel

*Deceased

**MPM Staff & Former Staff

Names listed in bold denote

members of the HHM, MPM, and

WMNC Board of Directors

2022-2023 TRUSTEES OF TRADITION

Trustees of Tradition are individuals whose legacies demonstrate their commitment to carrying forward the mission of the Milwaukee Public Museum into the next century and beyond. This is a complete and current list as of October 26, 2023.

Kathryne & Steve Ahrens
Amy & Troy Andersen
Anonymous
Anonymous
Dorothy Aring
F. Tessa & Richard N. Bartels
Gertrude Bates*
Priscilla & Anthony Beadell
Thomas Bliffert*
John Blimke, Ph.D.
Lynn & Doug Brengel
Laurette Broehm
Patricia M. Buck*
Lieselott Buettner*
Susan E. Buxton*
Carol A. Carpenter
John & Julie Carpenter
Curtis L. & Jean E. Carter
Anthony and Vicki Cecalupo
Lynn Chappy
Margaret & George Chester, Sr.*
Norman & Lucy Cohn*
Mary C. Corcoran*
Florence & Roland Cron*
Evelyn & Lawrence E. Demmer*
Mary & Fredrick H. Dohmen*
Mary F. Donald*
Patricia Emerson
Gertrude K. Erskine*
Nancy Davis & Chess Erwin
Roy Fried*
Constance & Dudley Godfrey*
Freda Huber*
Tom & Marilyn Fifielfd*
Linda Findley*
Thomas L. Frenn
Marjorie Garrison*
Elsa C. Gatzke*
David & Velma Geraldson
Brian Glenn
David Glenn
John R. Gmeindl
Pauline L. Goeltz*
Donald J. & Carolie M. Goniou*
Bernadine & Stephen Graff
Evelyn & Harold F. Grunewald*
Sally Hammond-Wells &
George Wells*

Kristin Hansen & Darrel Johnson
Earl E. Hart*
William C. Haynes*
G. Edward & Priscilla Heinecke*
Avis & James Heller*
Ann Bardeen Henschel, M.D.*
Elizabeth S. Herbon*
Thomas G.A. Herz
Esther Jane Hoffmann*
William Honrath & Elizabeth Blackwood
Janina Jach*
Joyce & Noral* Jacobs
Carol & Charles James
Susan & Leander Jennings
James H. & Carol J. Kelly
Cathy & Kenneth Kerzner
Charles Kletzschnig*
Mary Krall
Jeanne & Jack* Ladky
Debra L. Lampe-Revolinski



Dr. Nancy O. Lurie*
Kristie & Dr. John* Malone
Sally & Robert L. Manegold*
Joan A. Markel*
Mary Maude Mason*
Elizabeth J. May*
Pauline McKnight*
Ann & Charles McNeer*
David G. & Marion S. Meissner
Mary A. Mellows*
Dede Meyer Foote & Robert T. Foote*
Suzanne Miles*
Carol J. Miller*
Gregg A. Miller & Elizabeth M. Matz
Janet Miller*
Stephen D. Miller*
Steven J. Mintz
Patricia Mitschrich
Caroline & Albert Mundt*

M. Lucille Neff*
Lenore Nuesslein*
Helen & Jeanette Oberndorfer Fund*
Elizabeth O'Neill*
Mariette & Philip W. Orth, Jr.*
Elizabeth "Jolly" & Frederick L. Ott*
Lygere Panagopoulos
Martin H. Panning* Family Trust
Claire & Robert Pfleger
Julie Quinlan Brame & Jason Brame
Marion & Verne Read*
Tomm E. Renk
Albert E. Rinehart*
Dana & Peter Rokich*
William R. Rom*
Gayle Rosemann & Paul McElwee
Emanuel N. Rotter*
Dolores E. Rudolph*
Christine Rundblad & John Brander*
Betty Samuelson*
Randall Sandes*
Anita Sangor*
Ruth V. Schoen*
William E. Schultz*
Elizabeth Schulze*
Charles Earl Seraphine*
Alice M. Shaughnessy*
Ms. Susan Shields
Katherine Sieker*
Katherine M. Smith*
Yvonne B. Smith
Nita Soref*
Gretchen Sousek*
Gerald* & Louise Stein
John W. Taylor
Aaron & Anita Tilton*
Alice M. Treder*
Mike Van Asten
Hayette & Harvey E. Vick*
Lowell Warshawsky*
Marlene & Robert Watchmaker*
Audrey Wegner*
Edward Weschler*
Jean Whitmore*
Robert & Jessie Whitmore*
Joan C. Wiegand*
Barbara & Ted Wiley*
Jay & Madonna Williams
Patricia Smith Wilmeth*
Winifred & Webster Woodmansee*
Daisy Woods*
Diane & Richard Wright
Imogene M. Wyckoff*
Blanche R. Yale*
Allen M. Young
Mrs. Richard Zauner
Bettie Zillman*
Mary Jane Ziska Memorial Fund*

*Deceased

**MPM Staff & Former Staff



Looking Ahead: 2024

Join the fun! We've got several great events already planned for the newest fiscal year. Stay up to date at **mpm.edu**

MYSTERY AT MPM – JANUARY 13

TRIVIA NIGHT – JANUARY 25

FOOD & FROTH – MARCH 9

STREETS ALIVE! - MARCH 15-16

SCIENCE ON TAP - SPRING 2024

MPM GIVING DAY – APRIL 25

BIOBLITZ – JUNE 21-22