

WEAPONS

BEYOND THE BLADE

LIMITED ENGAGEMENT
OCTOBER 7, 2017 – JANUARY 1, 2018

WEAPONS: BEYOND THE EXHIBIT

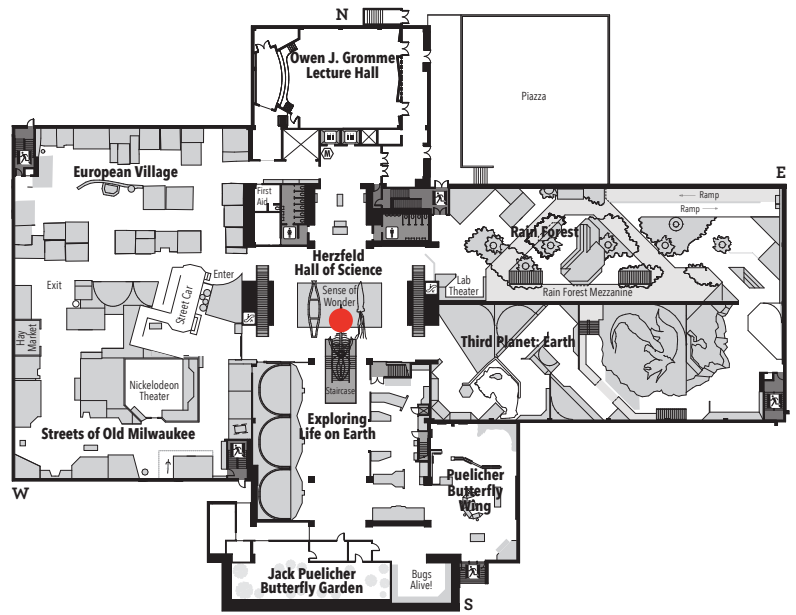
Continue exploring Milwaukee Public Museum's vast collection of weapons that are not in *Weapons: Beyond the Blade*. This guide is meant to facilitate discussion for students in grades 5-12 and will take you through all three floors of MPM's permanent exhibit galleries.

FIRST FLOOR

Sense of Wonder Exhibit

Animals rely on survival strategies which often manifest in physical/anatomical features. Some use these attributes for defense (a turtle's shell, for example), and some for hunting/feeding (think shark teeth). *Weapons: Beyond the Blade* invites visitors to reconsider how they think about weapons. Do you agree that certain physical adaptations could be considered weapons? Why or why not?

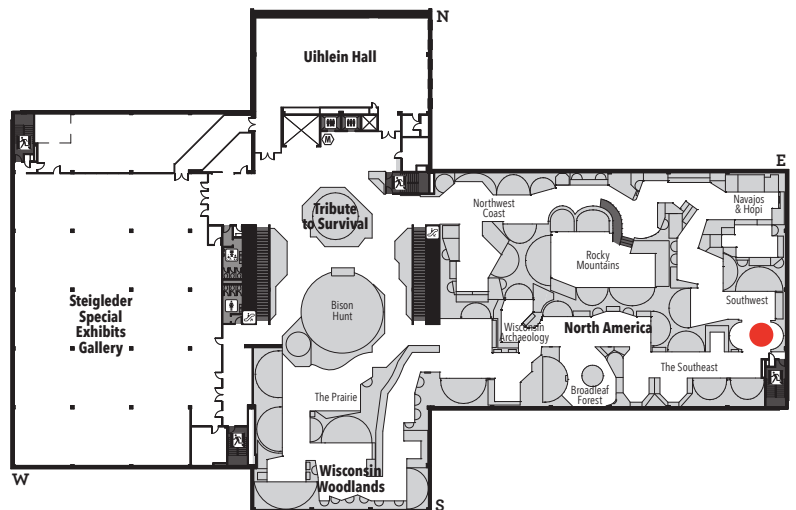
Take a look at some of the animals displayed here. Humans often find inspiration from nature when creating technologies; what parallels do you see between animal adaptations and human-made weapons? Why do you think these similarities exist?



SECOND FLOOR

Native Games Exhibit, Lacrosse

Although the sticks used in lacrosse and stickball may not technically be weapons, the game of lacrosse, typically played by men east of the Mississippi River in the United States and Canada, was commonly used to settle intertribal disputes over land and resources. What are some strategies humans have developed to resolve conflicts and prevent warfare? In what other ways do you think playing games was (and still is) an important social behavior?



THIRD FLOOR

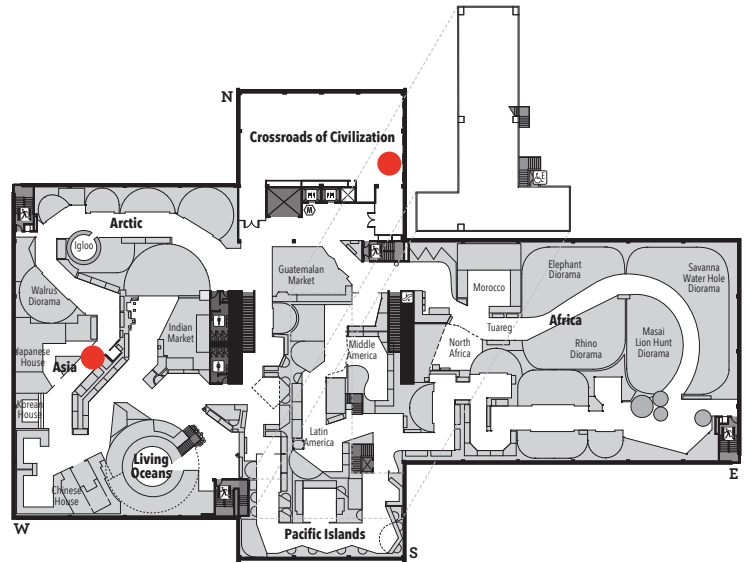
Asia Gallery, Japanese Samurai Workshop Exhibit

Take a look at the two Japanese craftsmen. Both have specialized jobs which require training in one specific area - either crafting armor or crafting swords. Reflect on the idea that weapons are not always used for violence. How have weapons influenced other aspects of life? How else do humans use and/or view weapons?

Take a look at the weapons displayed here. If you look closely, you may see other examples of the yumi long bow and the naginata, which are two types of Japanese weapons on display in *Weapons: Beyond the Blade*.

Crossroads of Civilization Exhibit, Conflict Section

As this section's labels explain, laws have long influenced (and been influenced by) weapons and warfare. Some were meant to prevent escalation of conflict, and some regulated production and possession of weapons themselves. How do modern American laws interact with weapons today? What are their purposes, and what are their effects? Do you see a similarity between laws discussed in *Crossroads of Civilization* and laws that govern us today?



Limited Engagement
October 7, 2017 – January 1, 2018
www.mpm.edu/weapons

800 West Wells Street | Milwaukee, WI 53233