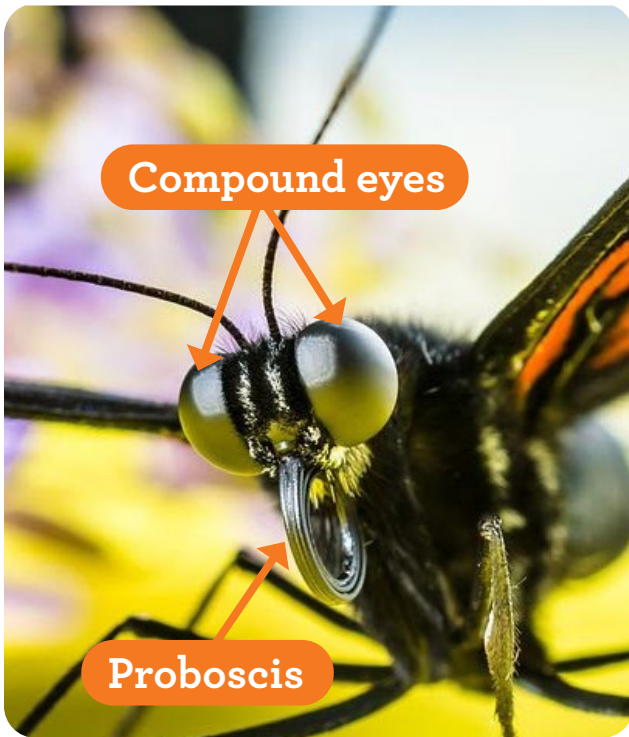


PLANT A BUTTERFLY GARDEN!



Butterflies have two large **compound eyes** that attract them to a variety of brightly colored flowers. These flowers contain **nectar**, a sugary liquid substance that butterflies will slurp up using their **proboscises**.

A **proboscis** is a tubular sucking organ. While at rest or in flight, the proboscis is coiled close to the head. Butterflies extend their proboscises to slurp up nectar from flowers, similar to how we use a straw when drinking out of a juice box.

Vocabulary Word

Compound eye: An eye made up of many separate visual units.

Did you know that butterfly habitats are in decline? Land development and pollution have greatly impacted the availability of nectar-producing plants that butterflies need to survive. **Support your local butterfly community by planting your very own butterfly garden!**

Directions

- 1 Choose an open, sunny area for your garden.
- 2 Grow plants that will be beneficial to both butterflies and their caterpillars.
- 3 Do not use pesticides in or near the butterfly garden.
- 4 Take time to enjoy your butterfly garden!

Have your parent or adult share your creation on social media, or email communications@mpm.edu and we will share what you have done!

